



**UNITED STATES DEPARTMENT OF COMMERCE**  
**The Secretary of Commerce**  
Washington, D.C. 20230

July 23, 2019

The Honorable Michael R. Pence  
President of the Senate  
United States Senate  
Washington, DC 20510

Dear Mr. President:

I am pleased to submit the annual report on the activities of the U.S. Economic Development Administration (EDA), U.S. Department of Commerce, for Fiscal Year (FY) 2018, in compliance with Section 603 of the Public Works and Economic Development Act of 1965, as amended (42 U.S.C. § 3213).

The report is designed to be a web-based resource. An interactive map allows readers to quickly retrieve the FY 2018 summary and case studies of investments in any given state or territory. With just one click, communities can see the projects EDA has undertaken with local partners in their region and around the country. I have enclosed a printed copy of the report for your review. To review the online version, please visit <https://www.eda.gov/annual-reports/>.

Sincerely,

A handwritten signature in black ink that reads "Wilbur Ross".

Wilbur Ross

Enclosure



**UNITED STATES DEPARTMENT OF COMMERCE**  
**The Secretary of Commerce**  
Washington, D.C. 20230

July 23, 2019

The Honorable Nancy Pelosi  
Speaker of the House of Representatives  
Washington, DC 20515

Dear Madam Speaker:

I am pleased to submit the annual report on the activities of the U.S. Economic Development Administration (EDA), U.S. Department of Commerce, for Fiscal Year (FY) 2018, in compliance with Section 603 of the Public Works and Economic Development Act of 1965, as amended (42 U.S.C. § 3213).

The report is designed to be a web-based resource. An interactive map allows readers to quickly retrieve the FY 2018 summary and case studies of investments in any given state or territory. With just one click, communities can see the projects EDA has undertaken with local partners in their region and around the country. I have enclosed a printed copy of the report for your review. To review the online version, please visit <https://www.eda.gov/annual-reports/>.

Sincerely,

A handwritten signature in black ink that reads "Wilbur Ross".

Wilbur Ross

Enclosure



# **ECONOMIC DEVELOPMENT ADMINISTRATION**

**Fiscal Year 2018 Annual Report**

**U.S. DEPARTMENT OF COMMERCE**

## Statement of the Assistant Secretary for Economic Development

It is a pleasure and honor to report to Congress the accomplishments of the U.S. Department of Commerce, Economic Development Administration (EDA) for Fiscal Year 2018. This fiscal year was marked with significant achievements and successes that can be attributed to the vision of the local communities in which EDA invested.

EDA helps create the conditions for economic growth by supporting locally-devised plans to spur business investment in communities at every step along their development path. From planning to project implementation, EDA facilitates the economic transformation of communities across the country.

EDA facilitates long-term growth strategies for communities and businesses through collaboration, providing a framework for discussion among all stakeholders. Strong collaboration among public and private sector actors helps communities and regions best assess their competitive strengths and design strategies to attract job-creating private investment.

In Fiscal Year 2018, EDA invested approximately **\$383.1** million in **662** locally-driven economic development projects nationwide. These investments included approximately \$147.2 million in Public Works and Economic Adjustment Assistance construction projects that communities identified as critical infrastructure enhancements necessary to ensure their long-term competitiveness. Of great importance, these EDA investments incentivized over \$173.1 million in local matching investments. Grantees expect these investments will help create or retain approximately **31,349** jobs and generate close to **\$3.5** billion in private investment.

EDA also supported economic development planning that helped communities make informed decisions on the best way to achieve economic growth. In FY 2018, EDA made 332 awards to regions and communities, providing them with close to \$38 million to develop such plans.

EDA also focused on effectively delivering \$587 million that had been appropriated to the agency by Congress to support local plans to recover – and grow back stronger – following major disasters that occurred in 2017. Many projects funded with these supplemental disaster funds began to be awarded in FY 2018 and EDA has continued to award these funds into FY 2019. EDA coordinates regional disaster recovery efforts in partnership with its extensive network of 391 Economic Development Districts, 52 Tribal Partnership Planning organizations, University Centers, institutions of higher education, and other organizations working to assist those in designated impact areas.

EDA supports President Trump's Opportunity Zone incentive, which was created under the 2017 Tax Cuts and Jobs Act. Opportunity Zones help stimulate economic development and job creation by encouraging long-term investments in low-income neighborhoods, an incentive naturally aligned with EDA's mission.

To assist communities that are interested in benefiting from this incentive, EDA adapted our [2018 Notice of Funding Opportunity for Public Works and Economic Adjustment Assistance Programs](#) to ensure entities within qualified Opportunity Zones were eligible for EDA funding.



Further, most recently, EDA added Opportunity Zones as one of our investment priorities, focusing prospective grantees' attention on projects in Opportunity Zones, and making such projects more competitive in EDA's merit-based selection process.

The Opportunity Zone incentives have the potential to directly impact the lives of approximately 31.3 million Americans across Opportunity Zones across all 50 states and the District of Columbia – or roughly 10 percent of the country. An additional 3.7 million people reside in Opportunity Zones in five U.S. territories. Since FY 2018, EDA has invested close to \$30 million in 40 projects in Opportunity Zones.

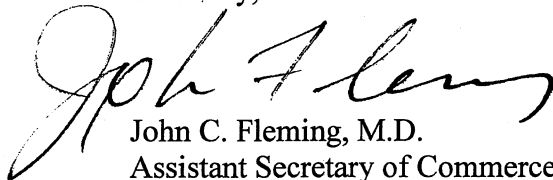
In addition, EDA leads the Federal Government's efforts to better integrate economic development resources from all sources, including federal, state, local and philanthropic, to achieve better outcomes for communities across America, including those in Opportunity Zones. A more integrated suite of economic development resources from across all federal agencies better facilitates community interaction with the Federal Government and helps communities implement their plans in a more effective way. Increased coordination across funding programs is also expected to result in a higher return on investment for federal resources included in these projects.

EDA is an effective steward of taxpayer dollars:

- Based on historical averages, every \$1 of EDA infrastructure funding helps to generate about \$15 in private investment.
- EDA investments are matched, on average, 1-to-1 in local investment.
- EDA infrastructure projects help to create and retain jobs at a historic average cost of about \$13,500 per job.

EDA is proud of the work it has done to move the economy forward and of the contributions it has made to help improve the Federal Government partnerships with its stakeholders.

Sincerely,



John C. Fleming, M.D.  
Assistant Secretary of Commerce  
for Economic Development

## OVERVIEW

### EDA'S MISSION

**To lead the federal economic development agenda by promoting innovation and competitiveness, preparing American regions for growth and success in the worldwide economy.**

The U.S. Economic Development Administration's (EDA) investment policy is designed to establish a foundation for sustainable job growth and the building of durable regional economies throughout the United States. This foundation builds upon two key economic drivers - innovation and regional collaboration. Innovation is key to global competitiveness, new and better jobs, a resilient economy, and the attainment of national economic goals. Regional collaboration is essential for economic recovery and prosperity because communities that work together as a region to leverage resources and use their combined strengths to overcome weaknesses will fare better in a global economy than those that do not. EDA encourages its partners around the country to develop new ideas and creative approaches to address rapidly evolving economic conditions.

### EDA'S ROLE

As the only federal government agency focused exclusively on economic development, EDA facilitates regional economic development efforts in underserved communities across the nation.

Guided by the basic principle that sustainable economic development should be locally-driven, EDA works directly with communities and regions to help them build the capacity for economic development based on local business conditions and needs. EDA's grant investments in planning, technical assistance, and infrastructure construction are designed to leverage existing regional assets to support the implementation of economic development strategies that make it easier for businesses to start and grow.

EDA's flexible programs and structure enable nimble operations and allow for innovation and responsiveness to changing economic needs and conditions faced by local and state government partners. Grants made under these programs are designed to leverage existing regional assets to support the implementation of economic development strategies that promote new ideas and creative approaches to advance economic prosperity in distressed communities.

EDA provides economic development financial assistance to communities so they can encourage innovation and entrepreneurship in a way that works best for them. Through its network of regionally-based staff and portfolio of flexible grant tools, EDA helps communities experiencing economic distress take control of their future and position themselves for economic prosperity and resiliency.

In Fiscal Year 2018, EDA also focused on working with disaster-impacted communities to begin to effectively deliver \$587 million that was appropriated to the agency by Congress to support

local plans to recover – and grow back stronger – following major disasters that occurred in 2017.

EDA coordinates regional disaster recovery efforts in partnership with its extensive network of 391 Economic Development Districts, 52 Tribal Partnership Planning organizations, University Centers, institutions of higher education, and other organizations working to assist those in designated impact areas.

Recently, EDA adapted its [2018 Notice of Funding Opportunity for Public Works and Economic Adjustment Assistance Programs](#) to ensure entities within qualified Opportunity Zones were eligible for EDA funding. Created under the 2017 Tax Cuts and Jobs Act, Opportunity Zones will help stimulate economic development and job creation by incentivizing long-term investments in low-income neighborhoods.

## NOTES

- The data presented in this report represent the official grant data for awards (organized by applicant State) made by EDA in FY 2018. EDA has verified the data through a reconciliation process, conducted annually, between EDA's grant management systems and the Department of Commerce's accounting system. As such, any previously provided information regarding EDA awards made in FY 2018 should be viewed as a snapshot of the data available at the time of the data request and are subject to any changes, corrections, or updates as reflected within this report. This includes, but is not limited to, revisions to the number, dollar amount, program classification and estimated impacts of specific grant awards.
- Projects described within individual state entries are provided as illustrative examples. No project preference should be inferred from these examples. EDA uses this report to demonstrate the breadth and diversity of EDA programs and the projects that it funds.

Alabama		
Program Category	# of grants per state	Sum of EDA \$
Disaster Relief	2	\$3,070,848
Planning	5	\$1,050,000
Public Works	4	\$6,794,557
Technical Assistance	1	\$118,000
<b>Grand Total</b>	<b>12</b>	<b>\$11,033,405</b>



Founded in 1966, Wallace State Community College in Cullman County, Alabama, is the third largest community college in the state with approximately 6,000 students. The college offers a variety of associate's degrees in academic, health and technical programs.

Among its more successful technical offerings is the college's welding program, which places 100 percent of its students in permanent welding positions, many before they even graduate. Currently, the welding program is operating beyond its capacity with some classes being held outdoors to accommodate its growing enrollment. In addition, the region suffers from a lack of incubator space as well as outmigration from young entrepreneurial adults.

In FY 2018, EDA awarded \$2 million in Public Works funds to help the college construct the Technical Education Center for Welding Technology and Entrepreneurship. The welding program will now be able to increase enrollment from 75 to 125 students and add a Computer Numerical Control and robotic automation training lab. In addition, the Center will have the capacity to serve up to 22 entrepreneurs while targeting high-growth businesses such as inventors, technology start-ups and small manufacturing companies. Sixty-eight new jobs are expected to be created as a result of this investment.

<b>Alaska</b>		
<b>Program Category</b>	<b># of grants per state</b>	<b>Sum of EDA \$</b>
Economic Adjustment		
Assistance	2	\$511,220
Planning	11	\$1,885,000
Public Works	2	\$2,362,571
Technical Assistance	1	\$150,000
<b>Grand Total</b>	<b>16</b>	<b>\$4,908,791</b>



Southeast Alaska has a land area of 35,138 square miles, comprised of seven boroughs and two census tracts. Currently, the population is 72,876 and there is a wide variety of industries including transportation, tourism, timber, maritime, energy, seafood, and ancillary support industries and businesses that constitute the region’s economy. In recent years, Alaska has been in a recession, due to the worldwide decline of the price of oil.

In order to assist regions in developing plans to address the unique economic challenges they face, EDA regularly provides Partnership Planning funding to support the development of Comprehensive Economic Development Strategies (CEDS). In FY 2018, EDA awarded \$210,000 to the Southeast Conference to support CEDS planning and implementation efforts for Southeast Alaska.

The Southeast Alaska CEDS brought together local governments, businesses and industry, and higher education institutions to create strategies to help the region to weather the states’ recession. The strategies focus on creative approaches to advance regional community and economic development and improved quality of life. The CEDS won the Southeast Conference national recognition from the National Association of Development Organizations (NADO), which awarded the Southeast Conference an Innovation Award in 2018. Based on surveys conducted by the Southeast Conference, 135 new businesses have been started in the following CEDS priority areas: energy – 1, shipbuilding – 14, seafood – 20, tourism industry – 67 and timber – 33, and \$82.3 million in private sector investment has been generated.

<b>Arizona</b>		
<b>Program Category</b>	<b># of grants per state</b>	<b>Sum of EDA \$</b>
Assistance to Coal Communities	1	\$339,572
Planning	6	\$710,000
Public Works	2	\$1,058,666
Technical Assistance	1	\$100,804
<b>Grand Total</b>	<b>10</b>	<b>\$2,209,042</b>



The Chinle Chapter of the Navajo Nation is located in a remote area of the Navajo reservation in northeastern Arizona. The region suffers from very low per capita income and chronic high unemployment. Due to its remote location, there are few employment opportunities for residents. Existing tribal revenues will be severely impacted by the impending closure of the Navajo Generating Station in December 2019, and subsequent closure of coal mines on the reservation.

The Chinle Chapter is seeking to diversify its regional economy and create employment opportunities by taking advantage of its unique location at the entrance to Canyon de Chelly, a national monument administered by the National Park Service. In FY 2018, EDA awarded \$250,000 in Public Works funds to the Chinle Chapter to design and engineer a Vendor's Village which will provide tourist facilities, commercial services, guide services, and related amenities.

Vendor's Village will serve as a major attraction at the entrance to Canyon de Chelly and will increase revenues at existing and new tribal tourist facilities. It will provide tourist amenities that are currently lacking and increase employment opportunities for tribal members while enhancing the regional economy.



<b>Arkansas</b>		
<b>Program Category</b>	<b># of grants per state</b>	<b>Sum of EDA \$</b>
Disaster Relief	1	\$592,357
Public Works	4	\$3,329,964
Technical Assistance	3	\$327,800
<b>Grand Total</b>	<b>8</b>	<b>\$4,250,121</b>



The development of a robust entrepreneurial environment is important to the success of Stone County, Arkansas. There are limited light manufacturing facilities located in the Stone County Industrial Park. They include Stone County Ironworks, Advanced Integrated Technologies, and Fiber Energy Products. Located across the highway from the industrial park is EZ Trac Trailers, a manufacturer of aluminum boat trailers since 2009. The company sells trailers to Excel Boat Company as well as to marinas and other boat companies.

In FY 2018, EDA awarded \$1 million in Public Works funds to Stone County for the construction of a county-owned manufacturing building to be leased to the Excel Boat Company to help it become more efficient and expand to meet current demand.

Due to competitive salaries and benefits, Excel Boats serves as an important regional employer with employees from several local counties.

The company has committed to 50 new full-time year-round jobs and is providing \$650,000 in private investment. The Excel Boat Company also purchases many of its supplies locally, boosting other businesses in the area. This new building and subsequent company expansion will provide a significant boost to the local economy in Stone County.

<b>California</b>		
<b>Program Category</b>	<b># of grants per state</b>	<b>Sum of EDA \$</b>
Disaster Relief	1	\$200,000
Economic Adjustment Assistance	6	\$5,630,037
Planning	10	\$782,165
Public Works	6	\$17,810,338
Technical Assistance	3	\$252,706
Trade Adjustment Assistance	1	\$1,373,911
<b>Grand Total</b>	<b>27</b>	<b>\$26,049,157</b>



Los Angeles County, California, is a prime area for the development and advancement of the bioscience industry. The county lacks the commercial bioscience lab space necessary for bioscience start-ups to flourish, however; local companies continue to seek lab space and facilities to train workers in regenerative technology. In addition, between July 2017 and January 2018, the county had Worker Adjustment and Retraining Notification Act (WARN) notices filed for over 10,000 area layoffs. Local companies struggle to create higher-skill, higher-wage jobs that will help those recently laid off and that will create a strong, sustainable economic base for the county.

In FY 2018, EDA awarded \$2,030,000 in Economic Adjustment Assistance funds to Cedars-Sinai for the purchase of equipment to support the Cedars-Sinai Biomanufacturing Center (CBC). This investment will enable Cedars-Sinai to equip two bio-tech labs in the CBC to: 1) serve academic, clinical, and commercial researchers to develop and scale the manufacture of clinical grade induced Pluripotent Stem Cell (iPSC) products in compliance with current Good Manufacturing Practices regulations suitable for investigational use in humans, and 2) provide space and facilities to train up to five individuals per week in iPSC regenerative technology, for which Cedars-Sinai has developed a proprietary process.



The overall project will leverage approximately \$47 million in private investments\* to facilitate the development, construction, and operation of the CBC and create a minimum of 444 new jobs. These jobs will be well-paying and high-skill in three specific technology platforms: 1) novel therapeutics and diagnostics; 2) bioengineering solutions for treating disease and other medical conditions; and 3) innovations in health care delivery.

The Cedars-Sinai Biomanufacturing Center labs will not only invigorate the economy on the west side of Los Angeles County and, more regionally, Southern California, but it will also catalyze the continued development of medical/science research, potentially leading to innovative treatments and, possibly, game-changing treatments for cancer, neurodegenerative diseases, eye diseases, and other chronic and acute medical conditions.

Colorado		
Program Category	# of grants per state	Sum of EDA \$
Assistance to Coal Communities Economic Adjustment	1	\$844,941
Assistance Planning Trade Adjustment	1	\$51,300
	7	\$471,000
Assistance	1	\$1,483,059
<b>Grand Total</b>	<b>10</b>	<b>\$2,850,300</b>



Just over an hour away from the high-end resort towns of Telluride and Gateway sits what is known locally as the “West End.” The towns that comprise the West End offer beautiful landscapes, slickrock canyonlands, broad fertile valleys, and snow-capped mountains like its more affluent neighbors, but do not enjoy the same prosperity. Mining and extraction have been central to the economy of these communities and current changes in those industries have created an economic crisis for West End communities. Further, the Nucla Tri-State Power Generation facility is set to close in 2022 and the New Horizons Coal Mine has shuttered, claiming hundreds of regional jobs.

Regional leaders recognize that the survival of these communities is dependent on fostering economic activity, diversifying the local economy, and creating and growing opportunities for family-supporting jobs. In FY 2018, EDA awarded \$844,941 in Assistance to Coal Communities (ACC) funds to the Telluride Foundation and West End Economic Development Corporation to launch the Advance West End program, an aggressive diversification strategy for the region.

Advance West End will focus on starting, growing, and retaining businesses, kick starting tourism and place making, creating an agricultural makerspace for food production, and workforce development. The project is expected to create or retain 23 jobs and spur \$637,000 in private investment.

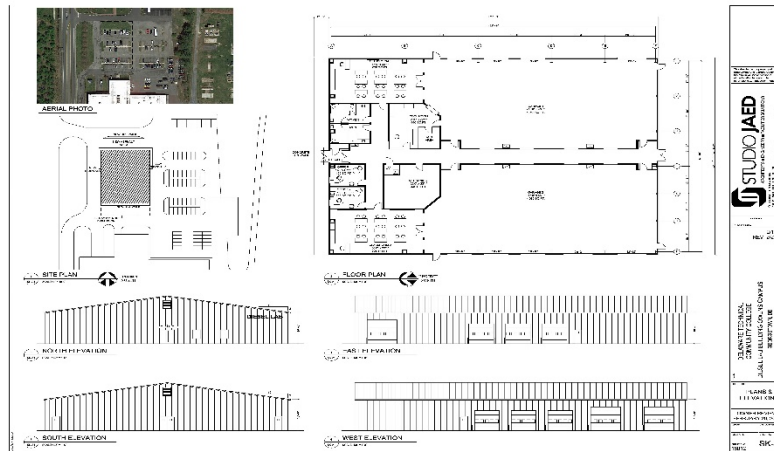
<b>Connecticut</b>		
<b>Program Category</b>	<b># of grants per state</b>	<b>Sum of EDA \$</b>
Planning	3	\$160,000
Technical Assistance	1	\$116,667
<b>Grand Total</b>	<b>4</b>	<b>\$276,667</b>

Connecticut faces economic difficulties, from the consolidation and relocation of major regional employers, an aging workforce, and the outmigration of college graduates. Increased demand in the aerospace and shipbuilding industries has the potential to improve the economic climate in the state, but major challenges exist. For example, the three top challenges identified by aerospace industry leaders in the U.S., are a shortage of skilled workers, lack of innovation in their supply chain, and pressures due to globalization.

In FY 2018, EDA awarded \$116,667 in Technical Assistance funds to the University of Connecticut for the development of the Connecticut Manufacturing Simulation Center (CMSC). CMSC will be located in a region with a strong commitment to sustaining the advanced manufacturing ecosystem to promote economic growth and synergies for the next generation by providing specialized training in modeling and simulation for manufacturing to over 850 participants.

The project will increase the capabilities of small and medium-sized enterprises (SMEs) in computational modeling and simulation technologies as a means to cultivate innovation, develop a high-skilled workforce, and expand regional businesses. Intense global competition has accelerated the pace of innovation and created new demands on SMEs, which often have limited or no research and development resources to manufacture improved products under compressed production cycles. CMSC recognizes that computational design, modeling and simulation using high-performance computing (HPC) can lower the cost of new product design and development, and enhance product testing and validation processes for virtually all manufacturing companies. CMSC will provide SMEs a shared technical assistance resource for computer-based design, development, testing, and validation that is capable of supporting new product development and innovation and improving SME competitiveness in the global economy. In addition, CMSC workforce development training initiatives will enable SME workforce to attain a higher level of technical literacy in computer-aided design and simulation to promote long-term innovation and business development within SMEs and the Original Equipment Manufacturers (OEMs) they supply. The CMSC will leverage the resources of the University in HPC, computer modeling and simulation, and business practices for the benefit of regional SMEs to address the shortage of trained workers, the need for manufacturing innovation, and the high operating cost for manufacturers in the state.

Delaware		
Program Category	# of grants per state	Sum of EDA \$
Public Works	1	\$1,975,800
Technical Assistance	1	\$116,667
<b>Grand Total</b>	<b>2</b>	<b>\$2,092,467</b>

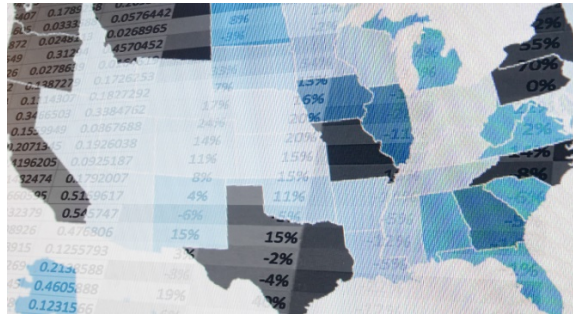


Delaware Technical and Community College (DTCC) is the only institution in the region that provides advanced technical training for workforce development in skilled trades. As of April 2018, multiple industries that rely on automotive technicians and diesel mechanics including agriculture, fisheries, and the consumer services industry like car dealerships and other automotive service providers, were experiencing unemployment higher than the national average. DTCC sought methods to produce most or all of the skilled workers in many of these sectors by doubling the number of automotive technical training programs and establishing the first and only diesel mechanic training program.

In FY 2018, EDA awarded \$1,975,800 in Public Works funds to DTCC for the construction of the Automotive Center of Excellence (ACOE), an automotive and diesel mechanic training facility. The new facility will allow the college to provide certification in this specialized automotive field to address the critical need for diesel mechanics in the area.

With this investment, DTCC has committed to create 43 new jobs as well as retain 44 jobs with an estimated private investment of \$1.5 million. In addition, the ACOE created new opportunities for diesel and automotive-related businesses in the region, which will create more high-skilled jobs. Businesses in the region have shown their support for the project through financial and job commitments.

District of Columbia		
Program Category	# of grants per state	Sum of EDA \$
Disaster Relief	1	\$100,000
Economic Adjustment Assistance	1	\$600,000
Research and Evaluation	1	\$1,098,990
Technical Assistance	4	\$898,540
<b>Grand Total</b>	<b>7</b>	<b>\$2,697,530</b>



The District of Columbia is home to many national organizations that contribute to economic success in areas across the country, including the Urban Institute (Urban). Celebrating a 50-year legacy of impact, Urban has been an independent, authoritative source of evidence and data analysis to ensure that important decisions are rooted in reliable information. Urban serves a wide variety of stakeholders including national programs, state and local governments, nonprofit organizations, foundations, philanthropists, journalists, and communities.

Urban is conducting a large-scale program evaluation of EDA’s impact using data from 1997-2017. In FY 2018, EDA entered a 2-year, \$1,098,990 Research and Evaluation cooperative agreement award with Urban in which EDA is providing data and input into Urban’s models for evaluating the success of EDA’s past projects, with the goal of communicating those project successes to EDA stakeholders and to better understand the pathways which enable the success of EDA’s investments. Urban will improve and expand analysis of the impact of EDA’s investments by building on the existing body of work produced by EDA-funded Grant Thornton and Rutgers University analyses, as well as SRI’s (Stanford Research Institute International) assessment of the link between EDA’s non-infrastructure programs and capacity building outcomes associated with long-term economic growth.

The results of this research will be accessible to both technical and non-technical readers, with the goal of better informing the economic development community at large. This project also includes the development of data visualizations and immersive narratives around EDA projects and their transformative and catalytic nature. Urban will be creating a new website to highlight EDA’s work and the results from the research completed under this award. The focus of this new site is to make research findings and EDA materials available to economic development stakeholders and practitioners for the purposes of improving outcomes at local levels and for the benefit of future EDA applicants.

<b>Florida</b>		
<b>Program Category</b>	<b># of grants per state</b>	<b>Sum of EDA \$</b>
Disaster Relief	6	\$32,719,345
Economic Adjustment Assistance	9	\$1,896,304
Planning	3	\$630,000
Public Works	1	\$1,000,000
Technical Assistance	2	\$236,000
<b>Grand Total</b>	<b>21</b>	<b>\$36,481,649</b>



After a decade in operation, the Eagle Flight Research Center in Daytona Beach, Florida, Embry-Riddle Aeronautical University's aerospace research and development facility, was running out of physical space, limiting the research and development capabilities of the center. The University sought to construct a new research center/hangar to add capacity and respond effectively to industry demand by providing a state-of-the-art facility that would enable the Eagle Flight Research Center to conduct the latest in aviation research, testing, and engineering technology.

In FY 2018, EDA awarded \$1 million in Public Works funds to the University, with assistance from the East Central Florida Regional Planning Council, to build a 20,000 square foot research facility with flexible lease space for industry at the Embry-Riddle Research Park with direct access to Daytona Beach International Airport.

With this investment, three high-tech aviation and engineering firms have committed to create a combined total of 387 new jobs and provide \$1.64 million in private sector investment. Additionally, this project will enhance innovation in the region's aviation and aerospace industry clusters by supporting the development of Unmanned Aerial Vehicles (UAVs) and hybrid electrified-propulsion research.



<b>Georgia</b>		
<b>Program Category</b>	<b># of grants per state</b>	<b>Sum of EDA \$</b>
Disaster Relief	3	\$3,710,104
Economic Adjustment Assistance	1	\$750,000
Planning	1	\$210,000
Public Works	3	\$3,091,796
Technical Assistance	2	\$238,000
Trade Adjustment Assistance	1	\$1,243,456
<b>Grand Total</b>	<b>11</b>	<b>\$9,243,356</b>



The Pittsburgh neighborhood of Atlanta is named after the western Pennsylvania steel city due to its industrial roots. Long suffering from disinvestment, poverty, and high unemployment, Pittsburgh was also a victim of the housing crisis in 2008 with exceptionally high vacancy rates and declining home values. To help address these challenges and bring more jobs to the region, community leaders have long sought an economic development solution for Pittsburgh’s vacant 31-acre, former trucking facility known as 352 University Avenue.

In FY 2018, EDA awarded \$1,550,104 in Disaster Relief funds to UA Associates I LLC, the Annie E. Casey Foundation, Columbia Core Partners and the city of Atlanta to support site improvements as well as its Opportunity Zone designation.

The Pittsburgh community is transforming 352 University Avenue into Pittsburgh Yards, a mixed-use development that will support small businesses, the trades, artisans and light manufacturing. The first phase of the project will attract over \$20 million in private investment and will be completed at the end of 2019.

<b>Hawaii</b>		
<b>Program Category</b>	<b># of grants per state</b>	<b>Sum of EDA \$</b>
Economic Adjustment Assistance	2	\$376,100
Planning	1	\$85,000
Technical Assistance	1	\$125,000
<b>Grand Total</b>	<b>4</b>	<b>\$586,100</b>



In recent years, Maui County has experienced severe job losses, particularly following the closure of the last sugar plantation in Hawaii, which led to an estimated loss of 675 jobs. To address the needs of displaced agricultural workers, the University of Hawaii Systems, Honolulu, Hawaii sought assistance with promoting and supporting entrepreneurship and export development through the creation of a packaging and marketing center at the University.

In FY 2018, EDA awarded \$210,000 in Economic Adjustment Assistance funds to the University for the purchase of equipment for the Maui Food Innovation Center at the University of Hawaii's Maui campus. The facility is a product development and manufacturing site for agribusiness and food entrepreneurs. The innovation project helps to bolster a food production-to-consumption value chain and support food-business entrepreneurship and innovation throughout the region.

EDA's funding is significantly leveraged by over \$7 million in other funding contributing to the development of the Center and is estimated to contribute directly to 32 of the over 270 new jobs anticipated to be created as a result of this public initiative.



<b>Idaho</b>		
<b>Program Category</b>	<b># of grants per state</b>	<b>Sum of EDA \$</b>
Economic Adjustment Assistance	3	\$2,233,344
Planning	8	\$925,000
Public Works	2	\$2,236,200
Technical Assistance	1	\$125,000
<b>Grand Total</b>	<b>14</b>	<b>\$5,519,544</b>

Idaho Rural Water Association (IRWA) trains workers throughout the state to operate municipal and industrial water and wastewater systems. However, the organization lacked the capacity and tools to provide best practices in hands-on, real-world experiences for new workers entering the industry or for the recertification coursework needed for current operators to keep their licenses. Skilled operators are hired by private businesses, such as food manufacturers, as well as private and public utilities, and are critical to local Idaho economies. Skilled system operators are also important for disaster mitigation and response, which was sorely needed when floods ravaged much of Idaho in 2017. In addition, many of Idaho’s water and wastewater system operators are expected to retire in the coming years, and there are not enough skilled operators to replace them.

In FY 2018, EDA awarded \$1,447,200 in Public Works funds to the IRWA to help build a workforce training center. The facility will provide real-world experience for operators to do their job effectively, as well as increase the training capacity to meet current and future demand. The center will also allow IRWA to begin an apprenticeship program, developed in cooperation with the Idaho Workforce Development Council.

Based on their track record, increased training capacity, and projected openings, IRWA expects the facility to create 50 jobs, retain 500 jobs, and leverage \$450,000 in private investment. The operators that graduate will assist the growth of manufacturing, research, and other businesses. The facility will also bolster disaster mitigation and response throughout Idaho; by training operators on how to protect water and wastewater facilities during major flooding events.

<b>Illinois</b>		
<b>Program Category</b>	<b># of grants per state</b>	<b>Sum of EDA \$</b>
Economic Adjustment Assistance	3	\$3,511,342
Planning	11	\$1,320,774
Public Works	5	\$7,942,183
Technical Assistance	2	\$108,000
Trade Adjustment Assistance	1	\$1,090,998
<b>Grand Total</b>	<b>22</b>	<b>\$13,973,297</b>



America's Central Port District in Granite City, Illinois currently operates a full-service, inland river port with an annual throughput in excess of 2.5 million tons and a 1,200-acre intermodal industrial park. America's Central Port is one of the largest multi-modal facilities along the Mississippi River. Because of the past success of the Port, there is currently a critical lack of development space, buildings, and infrastructure for potential tenants.

In FY 2018, EDA awarded \$2,272,895 in Economic Adjustment Assistance funds to aid the Port's ongoing redevelopment efforts and increase its economic impact in the region. Two corporations, ZeCoat Corporation and SCF Lewis & Clark Marine, indicated they would retain 32 jobs, create an estimated 16 new jobs, and make private investments totaling \$1.25 million over the next 5 years as a result of this investment.

An economic impact report by the Southern Illinois University Edwardsville School of Business' Office of Regional Economic Analysis using the IMPLAN model estimates that the EDA investment will result in an ongoing, annual economic impact of \$16 million, create and retain 124 jobs with labor income of \$6 million annually, and generate over \$550,000 in state and local taxes each year.

<b>Indiana</b>		
<b>Program Category</b>	<b># of grants per state</b>	<b>Sum of EDA \$</b>
Planning	2	\$954,393
Technical Assistance	2	\$210,000
<b>Grand Total</b>	<b>4</b>	<b>\$1,164,393</b>

The Purdue Center for Regional Development (PCRD) and Ball State University's (BSU) Indiana Communities Institute serve as an EDA University Center for the state of Indiana. Their joint partnership concentrates on five areas of capacity building support to the state: (1) build and sustain vibrant local and regional collaborations; (2) expand the suite of innovative data tools for advancing local and regional planning; (3) strengthen the connection of entrepreneurs and small businesses to their region's innovation clusters; (4) enhance global market opportunities for second stage manufacturing firms embedded in distressed areas of the state; and (5) explore the talent needs of regional innovation clusters and enhance the talent pipeline of Indiana Association of Regional Council (IARC) member organizations. Collectively, these five focus areas will position the joint University Center to offer a cohesive set of programs to key stakeholders in Indiana.

In FY 2018, EDA awarded \$160,000 in Technical Assistance funds to PCRD and BSU. The funds supported the University Center in providing technical assistance, conducting applied research, and building capacity. This project, aptly titled Harnessing the Economic Assets of Indiana Regions and Communities: Strengthening Information, Collaboration, and Innovation, brings together two universities to provide on-going support to Economic Development District organizations, economic development professionals, and other community stakeholders.

Under this award, PCRD and BSU undertook an exhaustive review of zip codes to provide detailed analysis and information about poverty in the North Central Region (Midwest), including the state of Indiana. By homogenizing zip code information over decades, they created a tool for researchers to use with new initiatives, such as Opportunity Zones.

<b>Iowa</b>		
<b>Program Category</b>	<b># of grants per state</b>	<b>Sum of EDA \$</b>
Disaster Relief	1	\$3,000,000
Economic Adjustment Assistance	1	\$100,000
Planning	17	\$1,225,000
Public Works	1	\$1,743,558
Technical Assistance	2	\$269,000
<b>Grand Total</b>	<b>22</b>	<b>\$6,337,558</b>



Ames, Iowa is a small community that is home to rapidly growing Iowa State University (ISU) with leading agriculture, design, engineering and veterinary medicine colleges. ISU houses the Ames Laboratory on the ISU Campus which is a United States Department of Energy national laboratory. While half of the city's population is made up of ISU students, a low regional unemployment rate makes it difficult for companies to hire a qualified workforce and the per capita income lags behind the national average.

In an effort to create more opportunities for companies struggling with workforce issues, ISU Research Park is transferring its model of incubating startups to a new model of incubating talent. In FY 2018, EDA awarded \$1,743,558 in Public Works funds to ISU for expansion of the Park to allow a major U.S. manufacturer to locate a \$10 million test lab facility in the Park as well as open the Park for up to 12 new companies over the next decade.

This project addresses the local and regional need to recruit highly-skilled employees to the region and retain home-grown engineering and technical talent by providing high-quality jobs near the University. This investment will create an estimated 450 highly-skilled jobs for students graduating from the University and working at the various companies housed in the ISU Research Park.

<b>Kansas</b>		
<b>Program Category</b>	<b># of grants per state</b>	<b>Sum of EDA \$</b>
Planning	7	\$445,000
Public Works	2	\$1,588,609
Technical Assistance	3	\$342,500
<b>Grand Total</b>	<b>12</b>	<b>\$2,376,109</b>



Emporia is a strategically located community in East-Central Kansas. Its proximity to major interstates and rail has made it a regional employer and home to a diversified value-added agricultural manufacturing base with major brands operating from the city. Over the past decade, Emporia has suffered periodic job loss from the manufacturing sector, but it has maintained or grown in other industries. Even so, the per capita income remains below the U.S. average.

In FY 2018, EDA awarded \$1,341,000 in Public Works funds to the City of Emporia to create more job growth and business expansion by building a new one-million-gallon water tower at a local industrial park. The new water tower will allow for three additional lots in the park to be developed, bringing new jobs and industry to this region.

In addition, one local manufacturer has committed to expanding, creating 100 jobs and spurring an expected \$38 million in private investment.

<b>Kentucky</b>		
<b>Program Category</b>	<b># of grants per state</b>	<b>Sum of EDA \$</b>
Assistance to Coal Communities Economic Adjustment	8	\$8,361,995
Assistance	1	\$330,790
Planning	1	\$1,050,000
Public Works	2	\$1,485,000
Technical Assistance	1	\$118,000
<b>Grand Total</b>	<b>13</b>	<b>\$11,345,785</b>

Carroll County lies on the Ohio River in the northern part of Kentucky. It is the primary industrial area for the region. The county is above the national average for unemployment, but below the national average for per capita income. The community also suffered storm damage from a FEMA declared disaster and is eligible for federal disaster assistance.

In FY 2018, EDA awarded \$820,000 in Public Works funds to the City of Carrollton, the County Seat of Carroll County, to improve wastewater lines and build four new pumping stations. The improvements will not only accommodate the existing growth occurring in the area and allow for future growth within the heavy industrial area, but it will also support the expansions of a steel processing plant and steel manufacturer.

The grantee anticipates that 121 new jobs will be created from four beneficiaries and \$286 million will be generated in private investment.

<b>Louisiana</b>		
<b>Program Category</b>	<b># of grants per state</b>	<b>Sum of EDA \$</b>
Disaster Relief	2	\$318,000
Economic Adjustment Assistance	2	\$759,000
Planning	1	\$87,500
Public Works	3	\$2,800,000
Technical Assistance	2	\$225,700
<b>Grand Total</b>	<b>10</b>	<b>\$4,190,200</b>



The Louisiana State University (LSU) Innovation Park of Baton Rouge is currently home to 44 companies, a student and small business incubator, and over 250 employees. However, as companies have grown, they have had to move from the Innovation Park because there is insufficient space for expansion. In December 2017, the park lost a company with over 70 employees due to the lack of available space and lack of infrastructure along the main thoroughfare.

In FY 2018, EDA awarded \$1.1 million in Public Works funds to LSU to provide “front door” access to the Innovation Park, opening up 150 acres of land to future development. Access to this expanded portion of the Park will allow the development of facilities that could accommodate up to 42 new companies. Additionally, the National Guard will use this road to access their training and disaster recovery center, which will enhance disaster resiliency and mobility for the future.

According to the grantee, this investment is estimated to create 2,100 jobs and spur \$80 million in private investment.



<b>Maine</b>		
<b>Program Category</b>	<b># of grants per state</b>	<b>Sum of EDA \$</b>
Disaster Relief	1	\$5,348,810
Economic Adjustment Assistance	1	\$195,000
Planning	9	\$559,500
Public Works	3	\$3,375,000
Technical Assistance	2	\$177,667
<b>Grand Total</b>	<b>16</b>	<b>\$9,655,977</b>



The City of Rockland, Maine’s commercial fish pier supports the operations of Rockland-based commercial fishermen, primarily in lobstering, with the fifth largest annual catch by value. The pier also supports the fishing operations of its offshore islands including Vinalhaven which is Maine’s second largest lobstering port by catch value. The commercial fishing and lobstering industry is critical to the state and region, both directly in catch and support services sales, and indirectly in tourism and hospitality.

All of these fishing operations depend upon the pier for purchasing and loading bait and fuel, and for offloading and selling their catch. The pier, however, has deteriorated to the point that it has safety and operational deficiencies.

In FY 2018, EDA awarded \$830,000 in Public Works funds to the City for the renovation of the Rockland commercial fish pier by resurfacing the pavement, repairing sinkholes, replacing fender piles and supports, camels and water logs, wood cribbing, upgrading the electrical system and dredging approximately 10,000 cubic yards of adjacent bottom material. Once completed, this investment is anticipated to help retain 86 jobs.



<b>Maryland</b>		
<b>Program Category</b>	<b># of grants per state</b>	<b>Sum of EDA \$</b>
Planning	3	\$210,000
Public Works	1	\$2,282,750
Technical Assistance	1	\$116,667
<b>Grand Total</b>	<b>5</b>	<b>\$2,609,417</b>



The Town of Easton and Talbot County, Maryland as well as the Mid-Shore Regional Council Economic Development District, are determined to retain key manufacturing employers who are experiencing growth and offering high paying jobs. The mid-shore regional area experienced a decline in large manufacturing facilities over the past 10 to 15 years. Since late 2007, the region has experienced the closure of three manufacturing plants with an aggregate loss of nearly 600 jobs. To help cope with this job loss, the regional economy has depended on agriculture and tourism.

In FY 2018, EDA awarded \$2,282,750 in Public Works funds to the Town of Easton for the construction of a business park that can be used to support business expansion and incentivize future manufacturing and technology job development. The Mistletoe Hall Commerce-Business Park will also provide additional airport-related business sites for the adjacent Easton Airport, a full-service general aviation airport. It is estimated that this investment will add 55 new jobs, retain 137 jobs, and leverage \$4.5 million in private investment.

<b>Massachusetts</b>		
<b>Program Category</b>	<b># of grants per state</b>	<b>Sum of EDA \$</b>
Assistance to Coal Communities	1	\$330,566
Economic Adjustment Assistance	1	\$600,000
Planning	8	\$560,000
Public Works	1	\$3,000,000
Technical Assistance	1	\$116,667
Trade Adjustment Assistance	1	\$1,027,467
<b>Grand Total</b>	<b>13</b>	<b>\$5,634,700</b>



Chelsea is a 1.8 square mile urban municipality on the northern shore of the Boston Inner Harbor, bordered by the cities of Boston, Revere, and Everett, Massachusetts. Chelsea is home to the Chelsea Food Distribution Cluster New England Produce Terminal, the largest food terminal market in the U.S. With over 100 private businesses providing fresh produce throughout New England and Eastern Canada, the Chelsea Food Cluster employs over 1,000 area residents. Chelsea has faced long-term and chronic unemployment rates as high as 9.4 percent, further compounded by low per-capita income and high poverty rates.

In FY 2018, EDA awarded \$3 million in Public Works funds to the City of Chelsea with assistance from the Metropolitan Area Planning Commission, to provide infrastructure improvements to traverse the vital industrial area and its existing produce distribution facilities and logistics, wholesale trade, manufacturing and transportation firms. Businesses needed adequate connectivity in order to access regional highway systems, airports and the Port of Boston in order to transport produce to and from the distribution facilities.

With this investment, New England Produce Center has committed to creating 1,000 new jobs, saving 1,200 jobs, and leveraging \$8,697,974 in private investment. In addition, the infrastructure improvements will create new opportunities for other agricultural, distribution and manufacturing businesses in the area planning to expand their businesses.

<b>Michigan</b>		
<b>Program Category</b>	<b># of grants per state</b>	<b>Sum of EDA \$</b>
Economic Adjustment Assistance	1	\$40,000
Planning	6	\$733,000
Public Works	3	\$4,905,625
Technical Assistance	3	\$242,000
Trade Adjustment Assistance	1	\$1,075,632
<b>Grand Total</b>	<b>14</b>	<b>\$6,996,257</b>



Between Junction and Airport Road in Saginaw, Michigan is a historic transportation route. Dixie Highway is a critical corridor that provides area manufacturers with immediate access to Interstate 75. In addition, Dixie Highway serves as the major gateway to Michigan’s number one tourist destination, the City of Frankenmuth, also known as *Michigan’s Little Bavaria*.

In FY 2018, EDA awarded \$2 million in Public Works funds to the Saginaw County Road Commission for the reconstruction and expansion of Dixie Highway. It is estimated that the project will generate an immediate return on investment, with the creation of 54 jobs and \$6.5 million in private investment while simultaneously supporting increased economic opportunities for Amigo Mobility International Inc., Orchid Unique Orthopedic Solutions, GLE Precision, and numerous other companies. The project will also indirectly support dozens of tourism businesses in Frankenmuth, providing an annual economic impact of \$110 million on the regional economy.

<b>Minnesota</b>		
<b>Program Category</b>	<b># of grants per state</b>	<b>Sum of EDA \$</b>
Economic Adjustment Assistance	2	\$212,858
Planning	6	\$1,209,997
Public Works	2	\$4,690,615
Technical Assistance	1	\$160,373
<b>Grand Total</b>	<b>11</b>	<b>\$6,273,843</b>



On January 30, 2018, Electrolux Corporation announced the closure of its freezer manufacturing plant, impacting over 900 workers in this community of 70,213 residents. As the City of St. Cloud's second largest private employer, these lost jobs will impact every sector of the community, including housing, small businesses, education, and entertainment. In addition, the closure leaves a 45-acre site, containing a 900,000-square foot manufacturing facility and an adjacent 14,560-square foot training center vacant.

In FY 2018, EDA awarded \$112,858 in Economic Adjustment Assistance funds to the City of St. Cloud to hire an economic recovery coordinator to complete an analysis of the economic needs of the City after the closure of the local manufacturing plant and facilitate the quick recovery from this massive loss.

It is expected that the project will retain 4,285 jobs, create 300 new jobs and leverage \$60 million in private investment.

<b>Mississippi</b>		
<b>Program Category</b>	<b># of grants per state</b>	<b>Sum of EDA \$</b>
Disaster Relief	1	\$1,000,000
Economic Adjustment Assistance	2	\$1,583,391
Planning	5	\$842,000
Public Works	2	\$3,370,675
Technical Assistance	1	\$118,000
<b>Grand Total</b>	<b>11</b>	<b>\$6,914,066</b>

The City of Baldwin is located in Northeast Mississippi, 21 miles north of Tupelo. A six-inch natural gas line was installed in the late 1940s and early 1950s. Due to the scarcity of steel at the time, the line was made from steam pipe rather than steel pipe. This type of pipe is very thin and not designed for natural gas. The thin-walled steam pipe was considered dangerous and the gas line had become exposed in many areas over the last 60 years. The City was facing liability for damages if the line was to fail, and industry and business customers would be forced to close.

In FY 2018, EDA awarded \$1,555,675 in Public Works funds to the City of Baldwin to upgrade the existing natural gas line that serves commercial and residential customers, plus two large industrial parks, to increase capacity and provide reliable service immediately and well into the future.

EDA funding was crucial to this project. The City cannot meet the needs of current and future customers until its natural gas service becomes reliable and safe. This project is anticipated to create 425 new jobs and support 1,439 existing jobs with private investments of \$56.6 million.



<b>Missouri</b>		
<b>Program Category</b>	<b># of grants per state</b>	<b>Sum of EDA \$</b>
Disaster Relief	1	\$96,000
Economic Adjustment Assistance	2	\$2,229,940
Planning	20	\$2,240,000
Public Works	2	\$2,730,186
Technical Assistance	2	\$215,625
Trade Adjustment Assistance	1	\$1,128,913
<b>Grand Total</b>	<b>28</b>	<b>\$8,640,664</b>



A national nursing shortage is having negative impacts across the country, including less access to care, limited expansion of vital services, reduction in the quality and safety of care delivered, and strains on existing workforces. The impact of the nursing shortage was acutely felt in southwest Missouri. In fact, the Missouri Hospital Association reported in May 2017 that the staff nursing vacancy rate was up nearly seven percent that year, resulting in 16 percent of all staff nursing positions in Missouri hospitals going unfilled.

Cox College, located in Springfield, Missouri, offers a flagship nursing program to prepare nursing students for the complex skills required in today's health care landscape. However, the College's current nursing school facility was not able to meet the high demand of potential students or the need across the state for qualified, highly-trained nurses.

In FY 2018, EDA awarded \$2,230,186 in Public Works funds to Cox College to support regional workforce development in health care. The grant will help Cox College meet the industry demands by adding classroom space and new clinical areas as well as student-study and innovation spaces. The CoxHealth Foundation is working with more than a dozen local and regional health care providers who have pledged available and future positions for nurses who graduate from the Cox College nursing program. Cox College estimates that 465 jobs will be created through the expansion.

<b>Montana</b>		
<b>Program Category</b>	<b># of grants per state</b>	<b>Sum of EDA \$</b>
Economic Adjustment Assistance	2	\$380,596
Planning	20	\$1,845,000
Public Works	1	\$486,000
Technical Assistance	1	\$146,000
<b>Grand Total</b>	<b>24</b>	<b>\$2,857,596</b>



Federal Communications Commission data from 2016 indicated that nationwide, 10 percent of Americans do not have access to broadband, with rural areas experiencing significantly greater challenges to access. This digital divide has a limiting effect on rural residents in terms of employment, K-12 and higher education learning opportunities, healthcare, and support for businesses to locate or grow in rural areas. In Montana this rural-urban divide is substantial. Ninety-two percent of Montanans who live in urban areas have access to high-speed Internet. But for rural Montanans only 59 percent have access.

In FY 2018, EDA awarded \$486,000 in Public Works funds to InterBel Telephone Cooperative in Eureka, Montana, to help support the delivery of high-speed Internet services and the installation of fiber-optic cable to business customers located in Eureka. When completed, the project will help stabilize the region's labor market through job creation and business expansion in information technology infrastructure. InterBel estimates that this investment will help create 62 jobs and leverage \$150,000 in private investment.

<b>Nebraska</b>		
<b>Program Category</b>	<b># of grants per state</b>	<b>Sum of EDA \$</b>
Planning	7	\$770,000
Public Works	2	\$1,009,485
Technical Assistance	1	\$112,000
<b>Grand Total</b>	<b>10</b>	<b>\$1,891,485</b>



Douglas County, Nebraska and the Omaha metropolitan area is home to five Fortune 500 companies. An additional thirty Fortune 500 companies with manufacturing plants are in the metropolitan area. The region’s economy is well diversified and acknowledged for its high quality of life, solid economy, and low cost of living. At the same time, there are serious inequities, with several areas of the county suffering high rates of poverty and inequalities in education. Manufacturers in the Omaha metropolitan area report that the shortage of qualified workers is their main challenge.

Recognizing these challenges, Metropolitan Community College (MCC) launched a new Center for Advanced and Emerging Technology on its Fort Omaha Campus in 2017 to support demonstrations, workforce training, and pilots of new industry. The Center’s goal is to bring companies to campus to work side-by-side with faculty and students to simultaneously expand and enhance the region’s workforce pipeline, especially ensuring that students from high poverty neighborhoods have access to these career-boosting opportunities.

In FY 2018, EDA awarded \$393,812 in Public Works funds to MCC to remodel and retrofit the existing facility to expand and enhance hands-on, experimental learning in digital design, prototyping, and sustainable technology. MCC works closely with a variety of local industry partners, creating a pipeline for workers to enter good jobs in the region. MCC estimates that 450 jobs will be created because of this project.



<b>Nevada</b>		
<b>Program Category</b>	<b># of grants per state</b>	<b>Sum of EDA \$</b>
Economic Adjustment Assistance	1	\$80,000
Planning	1	\$80,000
Technical Assistance	1	\$125,000
<b>Grand Total</b>	<b>3</b>	<b>\$285,000</b>

Straddling the California-Nevada state line in the Sierra Nevada Mountains, Lake Tahoe is the largest Alpine Lake in North America. The region has a primarily tourism-based economy, focusing on skiing in the winter and water sports in the summer. The region has struggled to diversify the economy, create jobs outside of tourism, and increase resiliency due to the lack of broadband.

In FY 2018, EDA awarded \$80,000 in Economic Adjustment Assistance funds to the Tahoe Prosperity Center, a regional non-profit economic development organization, to better understand the challenges facing broadband deployment by conducting a feasibility study to determine alternatives and a path forward to provide business speed broadband to the entire basin. The Tahoe Basin covers communities in six counties in two states, creating many bureaucratic as well as geographic obstacles to potential service providers and fragmented and uneven service.

With the project well underway, the Prosperity Center is making progress to better facilitate broadband deployment around the lake, diversifying their economy by growing their emerging environmental innovation and health and wellness industry sectors, and entice many of their second homeowners to spend more time and conduct more business in the Tahoe Basin.

<b>New Hampshire</b>		
<b>Program Category</b>	<b># of grants per state</b>	<b>Sum of EDA \$</b>
Planning	3	\$280,000
<b>Grand Total</b>	<b>3</b>	<b>\$280,000</b>

New Hampshire has operated without a statewide economic development plan for the past 15 years and as a result, the state's economic development efforts have been fragmented among communities and regions, with no core statewide economic vision or goals around which resources and efforts can be directed. New Hampshire has three Economic Development Districts, which include approximately one third of the state's geographic area and an EDA-funded CEDS in a fourth region in the central part of the state.

The state's Department of Resources and Economic Development (DRED) recognized that a state plan was essential to meet its' economic needs during the next ten years. The 2008 recession affected New Hampshire's entire economic picture, but most of the state's programs and policies remain unchanged. DRED believes that a state plan will help prepare the state for future economic challenges as well as address the needs of the regions that are struggling to fully adapt to current economic realities.

In FY 2018, EDA awarded \$140,000 in Partnership Planning funds to the New Hampshire Department of Business and Economic Affairs to create a statewide economic development strategic plan. The plan will integrate numerous existing plans and include elements such as industry cluster analysis, economic and workforce development structures, foreign direct investment opportunities, economic resiliency, communications strategies, and public input.

<b>New Jersey</b>		
<b>Program Category</b>	<b># of grants per state</b>	<b>Sum of EDA \$</b>
Planning	1	\$70,000
Public Works	2	\$4,416,805
Technical Assistance	1	\$116,667
<b>Grand Total</b>	<b>4</b>	<b>\$4,603,472</b>



Unmanned Aircraft Systems (UAS) represent an escalating technological growth vehicle in the aerospace industry. These systems also reflect the fastest growing aerospace technology in the world today. Southern New Jersey finds itself with a unique advantage with respect to the proximity of special use airspace. There are several airports in South Jersey capable of hosting every UAS currently operating or in the developmental phase. Atlantic City International Airport offers full air traffic control services, ample ramp space, and close proximity to restricted and warning airspace.

The addition of the Stockton Aviation Research & Technology Park at the Federal Aviation Administration (FAA) William J. Hughes Technical Center also creates a synergy between aerospace and government agencies not available at any other location in the nation. Furthermore, aviation academies and other new educational and job training programs will provide career employment in this high-tech industrial sector. Despite all of these assets, the region lacks suitable space for UAS companies to research and produce their products.

In FY 2018, EDA awarded \$3 million in Public Works funds to the County of Cape May for the construction of a facility that will be specially designed to accommodate the needs of five UAS companies: American Aerospace, D-Tech International, USA, Sky Scape Industries, and Cellular Tech, which have committed to locating in the facility. This EDA investment will assist these companies with developing and manufacturing UAS drones. The project will create at least 130 permanent jobs and leverage \$1.9 million in private sector investment.

New Mexico		
Program Category	# of grants per state	Sum of EDA \$
Assistance to Coal Communities Economic Adjustment	1	\$1,000,300
Assistance Planning	3	\$1,100,000
Public Works	1	\$70,000
Technical Assistance	3	\$3,100,000
	2	\$225,700
<b>Grand Total</b>	<b>10</b>	<b>\$5,496,000</b>



The Village of Los Lunas in New Mexico has suffered from long-term economic distress, with an unemployment rate two points higher than the national average. Business attraction has been hampered by a lack of skilled workers to fill positions as steel workers, soil engineers, and electricians. The region is also experiencing a decrease in population due primarily to outmigration. Despite these challenges, the Village of Los Lunas has found itself on the cusp of a major economic boon.

With a population of 15,000, the Village is experiencing tremendous growth on its west side. To capitalize on investment, the Village looked towards developing the Central New Mexico Rail Park. The park will house manufacturing, assembly, warehousing, distribution and other logistic business sectors that will benefit from rail access.

In FY 2018, EDA awarded \$1.3 million in Public Works funds to the Village of Los Lunas to support water infrastructure to the park. The project will enhance the attractiveness of a site already certified and marketed by Burlington Northern Santa Fe, located off I-25 and I-40, and within 30 miles of an international airport, thereby providing much needed employment in the region. The initial job impact of the project is over 3,000 jobs, with more expected in the near future. This project will finally allow the region much needed intermodal freight capabilities to take advantage of freight flows through the region that will benefit the local economy.

<b>New York</b>		
<b>Program Category</b>	<b># of grants per state</b>	<b>Sum of EDA \$</b>
Planning	11	\$723,520
Public Works	3	\$3,703,000
Technical Assistance	3	\$333,334
Trade Adjustment Assistance	1	\$989,488
<b>Grand Total</b>	<b>18</b>	<b>\$5,749,342</b>

The Southern Tier West, an area that includes Allegany, Cattaraugus and Chautauqua counties in the Appalachian region of New York State abutting Pennsylvania, is one of the poorest regions of New York and also contains the highest concentration of privately-owned forest land in the state.

In FY 2018, EDA awarded \$1.5 million in Public Works funds to the State University of New York Research Foundation (SUNY RF) to assist in the renovation of an existing, privately-owned facility, construction of an addition, and the purchase of equipment. The Biorefinery Development and Commercialization Center (BDCC) is a scale-up prototype facility using the SUNY RF - Applied Biorefinery Sciences patented Hot Water Extraction process. The BDCC will take a fully proven 200-pound batch laboratory process and put in place a three ton a day prototype, continuous-processing system. The scale-up prototype will be used to develop full-scale commercial bio refineries of 700 tons a day facilities in the New York State Southern Tier. The wood used in the facility will be from tops and scrap wood, which would develop new markets in the region for landowners and encourage improved management of regional forests.

Once completed, the facility will assist private and public partners with leveraging wood resources to create sustainable businesses using advanced manufacturing processes. The project is expected to create five jobs in the next three to five years and over 260 jobs in five to nine years and leverage \$500 million in private investment.

<b>North Carolina</b>		
<b>Program Category</b>	<b># of grants per state</b>	<b>Sum of EDA \$</b>
Disaster Relief	1	\$2,031,480
Economic Adjustment Assistance	2	\$70,000
Planning	9	\$1,360,036
Public Works	5	\$8,842,975
Technical Assistance	3	\$354,000
<b>Grand Total</b>	<b>20</b>	<b>\$12,658,491</b>



Nestled in the picturesque Appalachian Mountains, Sylva, North Carolina, sits squarely in the midst of a region known for tourism, arts, and outdoor recreation. While these assets continue to be recognized, local leaders understand that without corresponding access to health care, the region’s economic potential would be stymied.

Southwestern Community College (SCC) has long provided a critical talent pipeline for healthcare jobs in the region. Demographic shifts in the region to an older population demanded greater numbers of specially trained workers for regional hospitals, clinics and long-term care facilities. As college leaders began assessing growth plans for the institution, the economic rationale for growing the health sciences programs was unmistakable. All the allied health programs at SCC reached capacity and had significant numbers of prospective students who were unable to be admitted due to class size limits.

In FY 2018, EDA awarded \$2,015,395 in Public Works funds to Jackson County and SCC to support the construction of a new 55,448 square-foot Health Sciences Building. This new building creates space for three new programs and expands the capacity of all the college’s existing health sciences programs, providing enrollment opportunities for 288 additional students. As a result, this project is expected to create 236 jobs, save 127 jobs, and bring in \$1.25 million in private investment.



<b>North Dakota</b>		
<b>Program Category</b>	<b># of grants per state</b>	<b>Sum of EDA \$</b>
Planning	16	\$1,585,000
Technical Assistance	1	\$100,000
<b>Grand Total</b>	<b>17</b>	<b>\$1,685,000</b>



The University of North Dakota (UND) is considered a pioneer in Unmanned Aircraft Systems (UAS) innovation. The University is uniquely located in the heart of an emerging UAS industry cluster, surrounded by small startups, cutting-edge industry leaders and anchored by the UAS Test Site at Grand Forks Air Force Base.

North Dakota has historically faced economic challenges resulting from its dependency on the agriculture and energy markets. Fluctuations and sharp downturns in these markets have only deepened the need for diversification. While the UND region continues to recover from job losses resulting from the downsizing of the Grand Forks Air Force Base, new economic opportunities have emerged from its new initiative in UAS. UND supported the regional and state efforts to capitalize on the open UAS market, which resulted in North Dakota securing one of the nation's first UAS test sites and the first commercial UAS business and aviation park.

In FY 2018, EDA awarded \$100,000 in Technical Assistance funds to UND to develop the UND Center for Autonomous Systems. The Center will facilitate the commercialization of autonomous systems innovation, which supports economic diversification and advances the state's position as a hub for the nation's growing UAS industry. Identified innovations are supported by targeted technical assistance and individual commercialization plans through a network of UND Center resources and external partners. The Center provides concept development, market research, patent and trademark searches, business planning, access to capital and acceleration and incubation. Internships and experiential learning opportunities address the need for industry-specific workforce development to facilitate sustainable business growth within this industry cluster.

<b>Ohio</b>		
<b>Program Category</b>	<b># of grants per state</b>	<b>Sum of EDA \$</b>
Assistance to Coal Communities	3	\$5,467,800
Planning	1	\$70,000
Public Works	1	\$958,885
Technical Assistance	3	\$258,205
<b>Grand Total</b>	<b>8</b>	<b>\$6,754,890</b>



Ohio University's George V. Voinovich School of Leadership and Public Affairs in partnership with the Ohio Valley Regional Development Commission (OVRDC) are aiding communities in the OVRDC region that have been impacted by the decline in the coal economy. The closure of two Dayton Power & Light facilities in Adams County will have a significant detrimental impact on Adams and surrounding counties, representing the loss of 370 direct jobs at the facilities and 1,131 jobs overall.

In FY 2018, EDA awarded \$1,603,204 in Assistance to Coal Communities funds to Ohio University for the Building Opportunities Beyond Coal Accelerating Transition Network project. This network will utilize economic development resources and regional collaboration to integrate activities across the OVRDC region and to accelerate the region's transition out of the coal economy via entrepreneurial growth, workforce development, cluster expansion, Opportunity Zone enhancement, and identification of infrastructure investment needs to access local, national and global markets. Three Economic Recovery Coordinators will provide services to Adams, Lawrence, and Scioto Counties.

The results of the project will yield employment opportunities via a diversified economy for displaced workers and new opportunities for entrepreneurs and manufacturers. Ohio University and OVRDC will serve as catalysts and coordinators for economic development for this twelve-county district in southern Ohio.

<b>Oklahoma</b>		
<b>Program Category</b>	<b># of grants per state</b>	<b>Sum of EDA \$</b>
Economic Adjustment Assistance	1	\$277,184
Planning	2	\$134,000
Public Works	2	\$1,990,000
Technical Assistance	1	\$112,850
<b>Grand Total</b>	<b>6</b>	<b>\$2,514,034</b>



The City of Sapulpa, Oklahoma, is located in the northeastern portion of Creek County. Founded in the late 1800s with the emergence of the railroad system and the discovery of oil in the area, the region is still largely dependent on the energy industry for new business development and growth of existing businesses. The railroad infrastructure, including the “wye” track in Sapulpa, still exists. However, direct and indirect opportunities that come from railroad operations are still limited. Data from the American Community Survey indicates that 15.7 percent of Creek County’s 71,312 residents live in poverty, with low per capita income and high unemployment.

In FY 2018, EDA awarded \$1.5 million in Public Works funds to the City of Sapulpa to purchase 225 acres of vacant land to attract a major company, as well as possible related companies, to the area. The initial private investment will help construct a headquarters campus with executive offices and a manufacturing and distribution facility. The project consists of six miles of sanitary sewer critical to this development. In addition to necessary infrastructure, the project is also supported through long-term intergovernmental collaboration between the federally recognized Native American tribe of the Muscogee (Creek) Nation (“the Nation”) and the City of Sapulpa. In support of the project, the Nation has pledged to offer significant assistance for the recruitment and training of new employees to meet the workforce demands for construction of the proposed project via partnerships with various entities such as the College of the Muscogee Nation and regional Technical Schools.

This project will lead to much needed economic diversification in the area, helping the region remain more resilient to downturns in the energy sector. Initial estimates show 1,515 jobs created and private investment of \$813 million, which is expected to grow as related industries move into the area improved by the sanitary sewer.

<b>Oregon</b>		
<b>Program Category</b>	<b># of grants per state</b>	<b>Sum of EDA \$</b>
Planning	17	\$1,820,000
Public Works	2	\$4,134,514
Technical Assistance	3	\$218,025
<b>Grand Total</b>	<b>22</b>	<b>\$6,172,539</b>



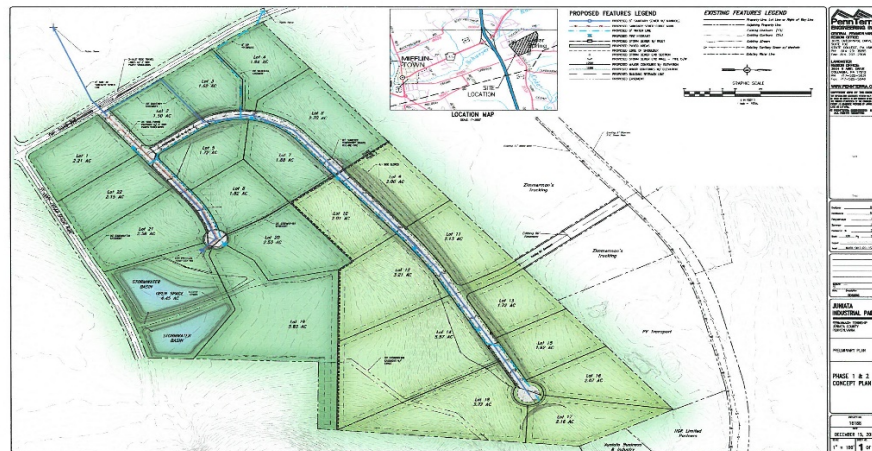
The Oregon Manufacturing Innovation Center (OMIC) facility in Scappoose, Oregon is the anchor for a planned innovation park. OMIC is a partnership of industry leaders in advanced manufacturing and higher education institutions, based on the model of the University of Sheffield's Advanced Manufacturing Research Centre in Great Britain.

OMIC partnered with Oregon Institute of Technology, Portland Community College, Oregon State University, and Portland State University to generate a plan to retrofit the existing Scappoose facility to convert it into an advanced manufacturing research and training facility. The plan is for OMIC to be a co-located Research and Development (R&D) and Training Center run by Portland Community College. It will augment the Greater Portland area's metals, machinery and manufacturing industry and train the next advanced manufacturing workforce.

In FY 2018, EDA awarded \$2,984,514 in Public Works funds to the Oregon Institute of Technology to retrofit and equip OMIC's Scappoose facility into the R&D and Training Center. The project has the potential to create up to 978 new jobs, retain over 500 existing jobs and result in \$692.4 million in private investment. In addition, the availability of approximately 400 acres of vacant land surrounding the facility allows for growth and co-location of industry research and production facilities.



Pennsylvania		
Program Category	# of grants per state	Sum of EDA \$
Assistance to Coal Communities	3	\$5,506,758
Planning	7	\$490,000
Public Works	1	\$155,000
Technical Assistance	1	\$116,667
Trade Adjustment Assistance	1	\$1,155,374
<b>Grand Total</b>	<b>13</b>	<b>\$7,423,799</b>



Juniata County is located in rural central Pennsylvania midway between the City of Harrisburg and Penn State University. Locally, there is a lack of available industrial space necessary to attract new businesses and allow existing manufacturing companies to expand. This region was highly impacted by the decline in the local coal industry. Because of the decline, the area suffers from high unemployment and low wages. Currently, Juniata County Industrial Park is filled to capacity which shows a demand for growth.

In FY 2018, EDA awarded \$1,890,000 in Assistance to Coal Communities funds to the Juniata Business and Industry, Inc., for assistance to provide fiber optic cable to the industrial park and surrounding area, a new access road, a gravity sewer line, a water line, and a storm water line. The Juniata County Industrial Park has 24 businesses with over 460 employees. This project will expand the infrastructure to serve an additional 12 lots where up to 12 companies will locate and employ approximately 230 people and offer family-sustaining wages.

With this EDA investment, SEDA-Council of Governments Natural Gas Cooperative has also committed to expanding into the park. This expansion is creating individual “gas islands” in rural areas where hard-lines do not exist. This capability expands the potential for manufacturing opportunities that didn’t previously exist by providing a “virtual pipeline” solution.

<b>Puerto Rico</b>		
<b>Program Category</b>	<b># of grants per state</b>	<b>Sum of EDA \$</b>
Disaster Relief Technical Assistance	9	\$19,948,890
<b>Grand Total</b>	<b>10</b>	<b>\$20,065,557</b>



In response to the massive destruction caused by Hurricanes Irma and Maria, Bio-nuclear of Puerto Rico, Inc. sought to help the Commonwealth of Puerto Rico both physically and economically by addressing future natural disasters and the persistent poverty in the area.

In FY 2018, EDA awarded \$4,442,000 in Disaster Relief funds to the Puerto Rico Science, Technology and Research Trust to construct a 30,000 square-foot building called The Forward Center, which will house up to 60 technology startups, and Bio-nuclear of Puerto Rico, a manufacturing company that researches and develops prototype activity or prototypes of neuro-modulator medical devices. The project provides space to expand Bio-nuclear's operations, thereby creating new high-skill jobs. It also supports local entrepreneurship by providing co-location space for early-stage companies enrolled in Parallel18 Venture's programs. This will help the Puerto Rican economy diversify, promote resiliency, and addresses out-migration by providing attractive facilities for Puerto Rican entrepreneurs to grow their early stage businesses without relocating to the mainland.

According to grantee estimates, the project is expected to create 687 jobs. In addition, this project will advance the establishment of the Governor's Economic Recovery Plan for Puerto Rico and promote bio-tech research and development and advanced manufacturing as leading initiatives to drive the economic recovery of Puerto Rico.



<b>Rhode Island</b>		
<b>Program Category</b>	<b># of grants per state</b>	<b>Sum of EDA \$</b>
Public Works	1	\$1,661,500
<b>Grand Total</b>	<b>1</b>	<b>\$1,661,500</b>



The aging infrastructure in the Port of Galilee in Providence, Rhode Island, has negatively impacted the viability of the commercial fishing industry in the Port and the businesses tied to the fishing industry. Specific concerns center on the integrity of the bulkhead along portions of the wharf and the structurally deficient state-owned piers and docks.

A January 2017 comprehensive engineering assessment of the Port facilities identified more than \$11 million in repairs and upgrades to deteriorating piers, bulkheads, and utilities that are necessary for the port to continue operating safely and efficiently as Rhode Island's largest commercial fishing port, comprised of 37 piers and related facilities supporting 260 commercial fishing vessels.

In FY 2018, EDA awarded \$1,661,500 in Public Works funds to the University of Rhode Island, Department of Environmental Management to replace three piers, repair damaged bulkheads, install pilings, and upgrade electrical service to maintain the functionality of the Port. This EDA investment is critical to the region's commercial fishing and tourism industries, and retaining the economic viability of the Port. This project is anticipated to help create 22 new jobs, retain 72 existing jobs and leverage \$1.2 million in private investment.

<b>South Carolina</b>		
<b>Program Category</b>	<b># of grants per state</b>	<b>Sum of EDA \$</b>
Disaster Relief	2	\$1,992,940
Economic Adjustment Assistance	1	\$3,000,000
Public Works	2	\$2,380,000
Technical Assistance	1	\$118,000
<b>Grand Total</b>	<b>6</b>	<b>\$7,490,940</b>

Piedmont Technical College, located in Greenwood County, South Carolina, was once dependent on the many textile mills that dotted the region. While very few textile mills remain in operation, the manufacturing roots of the state and region have helped attract new industries. As modern manufacturing relies heavily on technology, advanced skills and training will be required to meet the anticipated demand.

In FY 2018, EDA awarded \$1.5 million in Public Works funds to Piedmont Technical College, Inc., and the Piedmont Technical College Area Commission to assist with the construction of the Upstate Center for Manufacturing Excellence on the college campus in Greenwood, South Carolina. The Center will feature state-of-the-art equipment and resources to support the College's advanced manufacturing workforce training programs including mechatronics, welding, and machine tool technology.

The grantees estimate that EDA's investment will help generate 86 jobs and over \$16 million in private investment. It is anticipated that the full impact of the project will include over \$40 million in private investment and 215 jobs in the region.

<b>South Dakota</b>		
<b>Program Category</b>	<b># of grants per state</b>	<b>Sum of EDA \$</b>
Economic Adjustment Assistance	1	\$686,586
Planning	11	\$647,000
Public Works	1	\$969,000
Technical Assistance	1	\$145,000
<b>Grand Total</b>	<b>14</b>	<b>\$2,447,586</b>



Lake Norden is a small, rural town in northeastern South Dakota that is largely dependent on its manufacturing industry. Its main employer, a cheese manufacturer, consumes about 85 percent of the town’s water on a monthly basis. When this company wanted to make its largest capital improvement project in its history, it approached the city for needed water quality and quantity improvements at the local water treatment plant. These improvements will greatly enhance the quality of water in Lake Norden, eliminating the high concentrations of iron and manganese and making the water treatment plant more efficient.

In FY 2018, EDA awarded \$969,000 in Public Works funds to the City of Lake Norden for the development of a new wellfield, piping from the wellfield to the water treatment facility, and additional improvements to the water treatment facility. The cheese manufacturing company has committed to investing more than \$220 million and creating 125 jobs for the region. The new employees will be recruited from the 11 surrounding South Dakota communities from which its current workforce is also generated. The company’s products will be distributed throughout all 50 states and exported around the globe.

<b>Tennessee</b>		
<b>Program Category</b>	<b># of grants per state</b>	<b>Sum of EDA \$</b>
Assistance to Coal Communities Economic Adjustment	1	\$1,500,000
Assistance	1	\$190,916
Planning	7	\$1,470,000
Public Works	3	\$3,872,000
Technical Assistance	2	\$236,000
<b>Grand Total</b>	<b>14</b>	<b>\$7,268,916</b>



Franklin County, which lies in central Tennessee, had long been dependent on the coal-powered plant operated by Tennessee Valley Authority (TVA) in Jackson County, Alabama, for economic opportunity. Closure of the plant, which was one of TVA’s largest coal-powered plants and at one time employed over 500 people, resulted in economic hardship for Franklin County. To further economic growth following the closure, Franklin County identified continuing education as a need to encourage expansion and location of industry to the area.

In FY 2018, EDA awarded \$2 million in Public Works funds to Franklin County and the Tennessee College of Applied Technology to construct a facility to house six high-demand and advanced-skill training programs that will support manufacturing and healthcare in the area. In addition, Franklin County was awarded \$4.9 million in Community Development Block Grant funding from the state of Tennessee to support the project.

With this investment, Baxter Enterprises, Phoenix Boats, Diversatech Plastics, and Southern Tennessee Regional Health System-Winchester have committed to creating 250 new jobs, retaining 20 jobs and supporting \$7.5 million in private investment. In addition, Franklin County is home to Nissan Motor Corporation, which will utilize the facility for their future training needs.

<b>Texas</b>		
<b>Program Category</b>	<b># of grants per state</b>	<b>Sum of EDA \$</b>
Disaster Relief	14	\$33,830,000
Economic Adjustment Assistance	6	\$2,490,000
Planning	21	\$4,300,000
Public Works	6	\$6,950,000
Technical Assistance	4	\$413,550
Trade Adjustment Assistance	1	\$1,145,078
<b>Grand Total</b>	<b>52</b>	<b>\$49,128,628</b>



When Hurricane Harvey made landfall on August 25, 2017, the eye of the storm passed 10 miles north of the City of Port Aransas, inundating the town with storm surge and high winds exceeding 140 mph. As the town was evacuated, the storm disrupted businesses and destroyed essential infrastructure, including the Port Aransas Municipal Marina. In the wake of this destruction, City residents had to look outside of Port Aransas for work and the revenue from the City's marina, usually over \$600,000 per year, decreased by 43 percent.

In FY 2018, EDA awarded \$5 million in Disaster Relief funds to the City of Port Aransas for the purchase of property needed to house essential infrastructure and make much needed enhancements to the marina to protect against future storms, including improvements to floating and fixed docks, as well the pavilion and Harbor Master Office. As part of the City's overall recovery and resiliency plan, the City planned to rebuild and improve the marina, ensuring that it was built back stronger and more resilient.

The new infrastructure will protect the marina from similar damage in future weather events limiting the likelihood of the same economic devastation caused by Harvey. Not only will this improve outcomes in future disasters, but it is calculated to attract back current and draw future businesses, as they can be assured they will be better protected from future storms. Initial estimates reflect the creation of 61 new jobs and the retention of 71 jobs. In addition, expediting the repairs will allow community members, many of whom had to leave to find employment elsewhere following the storm, to come home and go back to work.



Utah		
Program Category	# of grants per state	Sum of EDA \$
Economic Adjustment Assistance	1	\$875,048
Planning	7	\$490,000
Public Works	2	\$2,068,427
Technical Assistance	1	\$143,000
<b>Grand Total</b>	<b>11</b>	<b>\$3,576,475</b>



Provo is one of the fastest-growing cities in Utah and offers a great quality of life. As the city looked to attract more businesses to its growing community, it found that the local business park needed upgrades to allow for companies to expand or locate there. Medic-Life, a smart medical equipment company, wanted to establish its headquarters in the park. The company's headquarters would require a cadre of highly-paid and highly-skilled managers and engineers to develop their products.

In FY 2018, EDA awarded \$1,819,227 in Public Works funds to the Provo City Corporation to expand the Mountain Vista Business Park by constructing roadway and utility infrastructure needed to support this business expansion and development.

This project will help Provo further develop an emerging technology and manufacturing campus inside the Mountain Vista Business Park. The city estimates that this investment will lead to 450 new jobs and will spur \$35 million in private investment.



<b>Vermont</b>		
<b>Program Category</b>	<b># of grants per state</b>	<b>Sum of EDA \$</b>
Economic Adjustment Assistance	2	\$752,420
Planning	2	\$140,000
Technical Assistance	1	\$330,000
<b>Grand Total</b>	<b>5</b>	<b>\$1,222,420</b>



Fairfax, Vermont, is just outside of the Burlington-South Burlington Metropolitan Statistical Area and, while the town hosts to a portion of Interstate 89, the commercial and economic benefits of the Interstate within the town have yet to be fully realized. Limited access to water and wastewater infrastructure also plays a role in the town’s ability to attract new job-creating businesses.

In 2017, Runamok Maple, a manufacturer of niche maple syrup, purchased a 50,000 square foot pre-engineered metal building in Fairfax that once housed a Milton Bradley wood products division, but the location lacked sufficient water and wastewater access.

In FY 2018, EDA awarded \$463,000 in Economic Adjustment Assistance funds to the Town of Fairfax to support municipal water and wastewater extension and access, which is crucial to the Runamok Maple business and long-range plan to house other food manufacturing startups. This EDA investment helped to close the financial gap for the project’s completion along with \$263,000 from the Northern Border Regional Commission. Runamok Maple plans to create up to 189 new jobs over nine years and anticipates up to \$3 million in private investment as a result of its improved operations and support for other food manufacturing startups.

<b>Virgin Islands</b>		
<b>Program Category</b>	<b># of grants per state</b>	<b>Sum of EDA \$</b>
Disaster Relief	1	\$304,000
<b>Grand Total</b>	<b>1</b>	<b>\$304,000</b>



Following Hurricanes Irma and Maria in 2017, the U.S. Virgin Islands (USVI) has an urgent need for economic recovery support and improved resiliency. The islands' economy had just begun to emerge from the fallout from the 2008 economic recession and 2011 closure of the Hovensa Oil Refinery prior to the hurricanes. The hurricanes halted that progress and further impacted the economy including lost output, declines in employment, substantial increases in initial unemployment claims, and declines in tourism.

In FY 2018, EDA awarded \$304,000 in Disaster Relief funds to the Government of the USVI for the development of a disaster resiliency plan that helps the USVI Bureau of Economic Research develop a Post-Disaster Resiliency Comprehensive Economic Development Strategy (CEDS) and Tourism Master Plan (TMP).

The USVI TMP will assess the tourism products and assets to understand what is in place, being rebuilt, or has closed. The goal is to develop a TMP that makes the tourism industry more competitive and resilient to natural, economic, and other disasters. Salient topic areas include destination audit and tourism asset inventory, destination assessment and stakeholder engagement, situational analysis, destination development, and action plan. The work will also support an updated CEDS that is integrated and coordinated with other post-disaster efforts.

<b>Virginia</b>		
<b>Program Category</b>	<b># of grants per state</b>	<b>Sum of EDA \$</b>
Planning	10	\$700,000
Public Works	1	\$3,150,000
Technical Assistance	1	\$116,663
<b>Grand Total</b>	<b>12</b>	<b>\$3,966,663</b>



According to a 2015 report by the Manufacturing Institute and Deloitte Consulting LLP, over 3.4 million manufacturing jobs will need to be filled across the United States over the next decade. The study also shows that thousands of additional manufacturing workers will be needed in Virginia to fill available job openings in advanced manufacturing, including in the Virginia Tobacco Region. Three occupational categories that are expected to face particularly acute talent shortages in the next decade: machinists, welders, and industrial machinery mechanics (a.k.a. mechatronics), were identified.

In FY 2018, EDA awarded \$3,150,000 in Public Works funds to the Commonwealth Center for Advanced Manufacturing (CCAM) to support the construction of a new building expansion to house the CCAM Apprentice Academy. The building will include classroom space, administrative support space, a break room, restrooms, and a high bay training area.

The CCAM is in the process of building a state-of-the-art education facility in automation, mechatronics, and machining. Through CCAM, apprentices and trainees can develop industry ready skills that will help to address the workforce skills gap in Virginia's manufacturing sector. CCAM research supports an array of sectors including aerospace, energy, transportation and national security. CCAM is a member-based non-profit with over 30 members, including Rolls-Royce, Siemens, Airbus, and Newport News Shipbuilding, the University of Virginia, Virginia Tech, Virginia Commonwealth University, Virginia State University, and Old Dominion University.

<b>Washington</b>		
<b>Program Category</b>	<b># of grants per state</b>	<b>Sum of EDA \$</b>
Assistance to Coal Communities	1	\$300,000
Disaster Relief	1	\$7,110,012
Economic Adjustment Assistance	1	\$30,000
Planning	10	\$1,063,000
Technical Assistance	2	\$200,000
Trade Adjustment Assistance	1	\$1,286,622
<b>Grand Total</b>	<b>16</b>	<b>\$9,989,634</b>



The Port of Pasco is located in south-central Washington adjacent to the Columbia River. Pasco is one of three contiguous cities known as the Tri-Cities, the major population center in the region. The Port of Pasco operates the Big Pasco Industrial Center which consists of warehouses and manufacturing facilities that utilize multi-modal transportation access from barge to rail and road. The region's main economy is dependent upon agriculture production and processing. In February 2017, the Port was impacted by severe storms. Roads were flooded and storm water retention created significant problems for their businesses and transportation networks.

In FY 2018, EDA awarded \$7,110,012 in Disaster Relief funds to the Port of Pasco for road repairs, storm water collection, management infrastructure to mitigate effects of the disaster, and to build future disaster resiliency.

The Port estimates that the EDA-funded infrastructure improvements will create an additional 270 jobs and retain an existing 100 jobs. The improvements will foster private sector investment and entrepreneurial growth, which will assist in stabilizing the local and regional economy and provide employment opportunities for the unemployed in an economically distressed community.

<b>West Virginia</b>		
<b>Program Category</b>	<b># of grants per state</b>	<b>Sum of EDA \$</b>
Assistance to Coal Communities	8	\$5,784,200
Disaster Relief	1	\$1,704,000
Economic Adjustment Assistance	1	\$1,212,000
Planning	11	\$800,000
Public Works	2	\$3,814,435
Technical Assistance	1	\$116,667
<b>Grand Total</b>	<b>24</b>	<b>\$13,431,302</b>



Brooke County, West Virginia, has suffered dramatic economic losses from the closure of coal, steel, industrial, and manufacturing facilities. The Ball Corporation, for example, shut down its manufacturing facility in 2017, displacing 320 employees. Brooke County and the rural town of Beech Bottom suffer from high unemployment and continue to struggle to diversify their economy and attract higher-wage jobs.

In FY 2018, EDA awarded \$2,640,000 in Public Works funds to the Business Development Corporation of the Northern Panhandle to rehabilitate the old Wheeling Corrugating Steel plant to allow for industrial expansion in this 480,000 square foot building. The Business Development Corporation had previously rented over 200,000 square feet of this facility to nine companies employing over 90 persons.

The roof needed to be replaced, portions of the electrical service upgraded, and concrete work on the remaining portion of the facility to site two new companies and facilitate one existing tenant expansion. This project serves as an anchor and a catalyst for diversification of industrial development in this rural area. With this investment, the three companies committed to the creation of 95 new jobs with a private investment of over \$1 million.



<b>Wisconsin</b>		
<b>Program Category</b>	<b># of grants per state</b>	<b>Sum of EDA \$</b>
Disaster Relief	1	\$3,677,920
Planning	5	\$659,880
Public Works	1	\$3,000,000
Technical Assistance	2	\$230,000
<b>Grand Total</b>	<b>9</b>	<b>\$7,567,800</b>



On July 19, 2017, the City of La Crosse Wisconsin, received 5.15 inches of rainfall in a 24-hour period. The rainfall event tied the record as the ninth wettest two-day rainfall in the City’s history. It overwhelmed parts of the City’s storm water system pipes, and pumping lift stations, causing surface flooding, erosion, and property damage.

Due to undersized and outdated storm water infrastructure, several of the City’s storm water lift stations, located within the La Crosse North Watershed Plan, are unable to keep up with major rain events. The underperforming infrastructure reduces the area’s ability to mitigate flooding during major rain events. The lack of adequate protection in developed areas as well as those with the potential for future development have become a priority for the region.

In FY 2018, EDA awarded \$3,677,920 in Disaster Relief funds to the City to redevelop and improve the critical storm water infrastructure in the La Crosse North Watershed Plan. The project increases the area’s resilience, and ability to recover from major rain events and grow and sustain its economic base. According to grantee estimates, the project is anticipated to build resiliency within the flooded industrial areas and corridors of the City, which will generate 50 new jobs, save 20 jobs, and leverage \$10 million in private investment.



<b>Wyoming</b>		
<b>Program Category</b>	<b># of grants per state</b>	<b>Sum of EDA \$</b>
Assistance to Coal Communities Planning	1	\$2,258,559
<b>Grand Total</b>	<b>2</b>	<b>\$2,298,559</b>



Wyoming is the top coal-producing state in the United States, producing 41 percent of the country's coal. The state suffered recent economic impacts as a result of the downturn in the coal industry. Hundreds of coal industry workers have been laid off in recent years. Wyoming's long-term dependence on coal and other mineral extraction have exacerbated the economic impact on the state, its communities, and higher education as its funding sources are shrinking at the very time that these services are needed most to train and re-train workers, support diversification efforts, and fortify struggling economies.

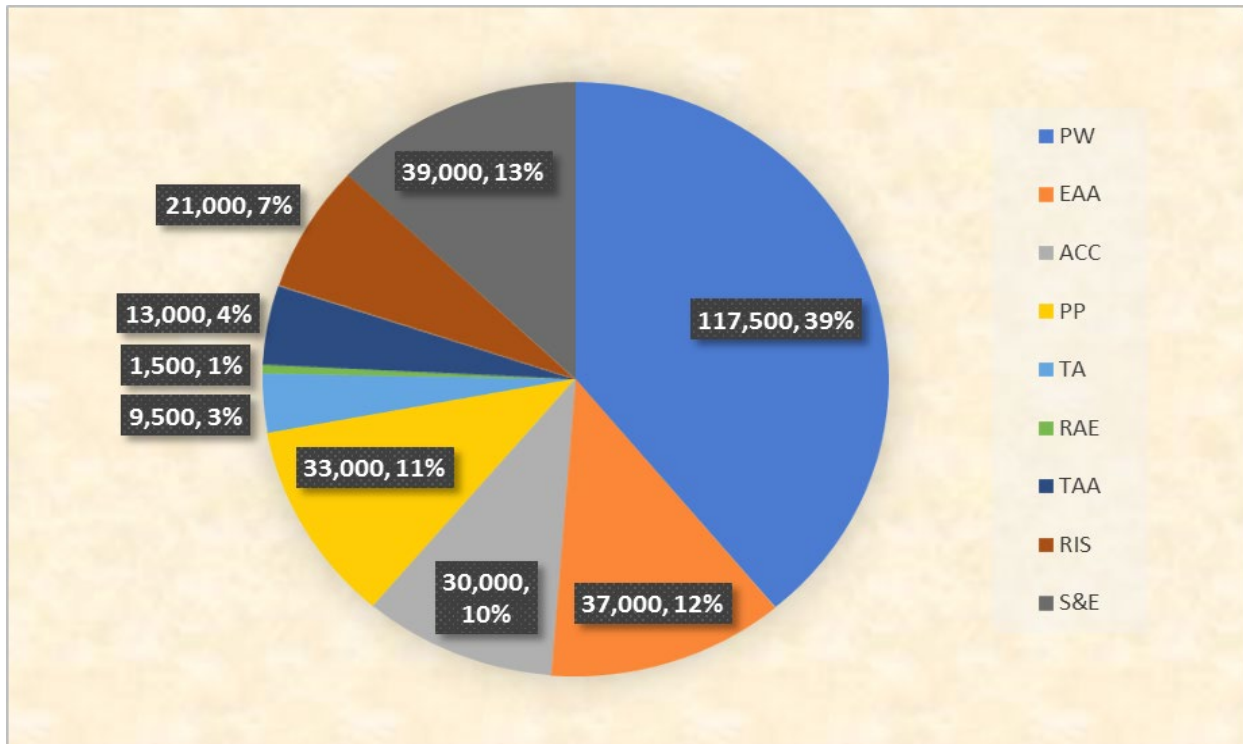
Wyoming leaders have targeted the manufacturing sector for growth and regional economic diversification. The City of Sheridan and Northern Wyoming Community College joined together to support a growing local manufacturing and engineering business that produces protective covers for American warfighters.

In FY 2018, EDA awarded \$2,258,559 in Assistance to Coal Communities funds to the Sheridan Economic and Educational Development Authority to fund the construction of a new manufacturing facility at the Sheridan High Tech Park. The investment will expand operations for the local manufacturing company. The project includes an insulated metal building structure, the purchase of equipment and materials, plumbing, electrical and data lines, and a fire suppression system. This investment supports the diversification of the economy, boosts new commercial and industrial development, and is expected to create 50 jobs and leverage \$1.1 million in private investment.

# APPENDIX

**Statement of Appropriations for Fiscal Year 2018**  
*(in thousands of dollars)*

<b>EDA PROGRAM CATEGORY</b>	<b>Appropriations Fiscal Year 2018</b>
Public Works (PW)	117,500
Economic Adjustment Assistance (EAA)	37,000
Assistance to Coal Communities (ACC)	30,000
Partnership Planning (PP)	33,000
Technical Assistance (TA)	9,500
Research and Evaluation (RAE)	1,500
Trade Adjustment Assistance (TAA)	13,000
Regional Innovation Strategies Program (RIS)	21,000
<b>Economic Development Assistance Program (EDAP)</b>	
<b>Subtotal</b>	<b>262,500</b>
<b>Salaries and Expenses (S&amp;E)</b>	<b>39,000</b>
<b>TOTAL</b>	<b>301,500</b>



## EDA Leveraging Goals for Private Sector

Section 603(b)(2) of the Public Works and Economic Development Act of 1965, as amended, requires EDA to include in its Annual Report to Congress a discussion of private sector leveraging goals set for investments awarded to (a) rural\* and urban economically distressed areas; and (b) highly distressed areas.\*\*

The following information is provided to respond to those requirements.\*\*\*

(a) EDA's private sector leveraging goal with respect to grants awarded to rural and urban economically distressed areas

EDA has consistently shown sound results in attracting private capital investment in both rural and urban distressed communities.

In FY 2018, EDA invested 61.8 percent of its PW and EAA funds, including Revolving Loan Funds (RLFs), in rural areas which grantees expect will leverage over \$2.6 billion in private investment; 38.2 percent of the funds were invested in urban areas which grantees expect will leverage over \$1 billion in private investment.

(b) EDA's private sector leveraging goal with respect to grants awarded to highly distressed areas

EDA recognizes the importance of private capital investment for successful economic development and recognizes the importance of maintaining significant flexibility to assist those communities that are taking the first steps toward economic growth. Therefore, EDA often makes prudent investments in areas where leverage ratios are low.

In FY 2018, EDA invested 45.9 percent of all its PW and EAA funds, including RLFs, in highly distressed areas, which, according to recipient estimates, are projected to generate \$652.6 million in private investment.

\*Rural includes investments made to Indian tribes.

\*\*For an area to qualify as being highly distressed, one of the following criteria must be met: (a) a 24-month unemployment rate of at least 200 percent of the national average, (b) per capita income not more than 60 percent of the national average, or (c) a catastrophic disaster.

\*\*\*U.S. Department of Defense reimbursable investments and disaster supplemental investments are not included in these calculations.



Summary of EDA FY 2018 Awards					
States/Territories	Award #	Applicant	City	Program Category	Total EDA \$
Alabama	40107248	JC Calhoun State Community College	Tanner	Public Works	\$ 1,535,000
Alabama	40107272	City of Brewton	Brewton	Public Works	\$ 2,800,000
Alabama	40107295	Wallace State Community College - Hanceville	Hanceville	Public Works	\$ 2,000,000
Alabama	40107299	City of Talladega	Talladega	Public Works	\$ 459,557
Alabama	4790714301	Mobile Area Chamber of Commerce Foundation, Inc.	Mobile	Disaster Relief	\$ 1,531,346
Alabama	4790715701	Industrial Development Board of the City of Daphne	Daphne	Disaster Relief	\$ 1,539,502
Alabama	ED17ATL3030030	Auburn University	Auburn	Technical Assistance	\$ 118,000
Alabama	ED18ATL3020010	West Alabama Regional Commission	Northport	Planning	\$ 210,000
Alabama	ED18ATL3020011	Top of Alabama Regional Council of Government	Huntsville	Planning	\$ 210,000
Alabama	ED18ATL3020012	South Alabama Regional Planning Commission	Mobile	Planning	\$ 210,000
Alabama	ED18ATL3020021	East Alabama Regional Planning & Development Commission	Anniston	Planning	\$ 210,000
Alabama	ED18ATL3020024	North Central Alabama Regional Council of Government	Decatur	Planning	\$ 210,000
Alaska	70107438	Organized Village of Kake	Kake	Public Works	\$ 1,800,000
Alaska	70107452	City of Chevak	Chevak	Public Works	\$ 562,571
Alaska	77907433	University of Alaska Anchorage	Anchorage	Economic Adjustment Assistance	\$ 120,000
Alaska	77907443	Bering Sea Fishermen Association	Anchorage	Economic Adjustment Assistance	\$ 391,220
Alaska	ED17SEA3020004	Central Council Tlingit And Haida Indian	Juneau	Planning	\$ 195,000
Alaska	ED17SEA3020044	Kenai Peninsula Borough Economic Development District	Kenai	Planning	\$ 225,000
Alaska	ED17SEA3020053	Southwest Alaska Municipal Conference	Anchorage	Planning	\$ 225,000
Alaska	ED17SEA3020066	Prince William Sound Economic Development District	Anchorage	Planning	\$ 70,000
Alaska	ED17SEA3020067	The Southeast Conference	Juneau	Planning	\$ 210,000
Alaska	ED17SEA3020069	Association of Village Council Presidents, Inc	Bethel	Planning	\$ 210,000
Alaska	ED17SEA3020070	Kodiak Area Native Association	Kodiak	Planning	\$ 150,000
Alaska	ED17SEA3020079	Dena' Nena' Henash	Fairbanks	Planning	\$ 180,000
Alaska	ED17SEA3020080	Bristol Bay Native Association, Inc.	Dillingham	Planning	\$ 180,000
Alaska	ED17SEA3030035	University of Alaska Anchorage	Anchorage	Technical Assistance	\$ 150,000
Alaska	ED18SEA3020009	Native Village of Barrow Inupiat Traditional Government	Barrow	Planning	\$ 180,000
Alaska	ED18SEA3020012	Borough of Northwest Arctic	Kotzebue	Planning	\$ 60,000
Arizona	7010715201	Chicanos Por La Causa, Inc.	Phoenix	Public Works	\$ 808,666
Arizona	70107457	Chinle Chapter Government	Chinle	Public Works	\$ 259,572
Arizona	77907460	Hopi Tribe Economic Development Corporation	Flagstaff	Assistance to Coal Communities	\$ 330,000
Arizona	ED17SEA3020054	Central Arizona Association of Governments	Apache Junction	Planning	\$ 70,000
Arizona	ED17SEA3020059	Northern Arizona Council of Governments	Flagstaff	Planning	\$ 75,000
Arizona	ED17SEA3020060	Southeastern Arizona Governments Organization Inc	Bisbee	Planning	\$ 75,000
Arizona	ED17SEA3020061	Hopi Tribe	Kykotsmovi Village	Planning	\$ 180,000
Arizona	ED17SEA3030024	Northern Arizona University	Flagstaff	Technical Assistance	\$ 100,804
Arizona	ED18SEA3020006	Inter Tribal Council of Arizona, Inc.	Phoenix	Planning	\$ 240,000
Arizona	ED18SEA3020010	Western Arizona Economic Development District, Inc.	Yuma	Planning	\$ 70,000
Arkansas	80105217	City of Fort Smith	Fort Smith	Public Works	\$ 800,000
Arkansas	80105225	Stone County	Mountain View	Public Works	\$ 1,000,000
Arkansas	80105264	City of North Little Rock	North Little Rock	Public Works	\$ 869,964
Arkansas	80105266	Cleveland County	Rison	Public Works	\$ 660,000
Arkansas	87905273	University of Arkansas World Trade Center AR	Fayetteville	Disaster Relief	\$ 592,357
Arkansas	ED18AUS3030027	University of Arkansas System	Little Rock	Technical Assistance	\$ 102,100
Arkansas	ED18AUS3030028	University of Arkansas System	Little Rock	Technical Assistance	\$ 112,850
Arkansas	ED18AUS3030029	Arkansas State University	Jonesboro	Technical Assistance	\$ 112,850
California	47907227	Los Angeles Operation Hope	Los Angeles	Economic Adjustment Assistance	\$ 750,005
California	7010727501	City of Willows	Willows	Public Works	\$ 1,218,304
California	70107415	San Manuel Band of Mission Indians	Highland	Public Works	\$ 2,964,360
California	70107441	Bishop Paiute Tribe	Bishop	Public Works	\$ 2,116,710
California	70107442	San Diego Electrical Training Trust	San Diego	Public Works	\$ 3,000,000
California	70107451	Peralta Community College District	Oakland	Public Works	\$ 3,000,000
California	70107461	City of Perris	Perris	Public Works	\$ 5,510,964
California	77907431	The California State University, Chico Research Foundation	Chico	Economic Adjustment Assistance	\$ 493,695
California	77907432	Renaissance Entrepreneurship Center	San Francisco	Economic Adjustment Assistance	\$ 300,000
California	77907440	Los Angeles Biomedical Research Institute at Harbor-UCLA Medical Center	Torrance	Economic Adjustment Assistance	\$ 788,774
California	77907444	County of Imperial	El Centro	Economic Adjustment Assistance	\$ 1,267,563
California	77907447	Economic Vitality Corporation of San Luis Obispo County	San Luis Obispo	Disaster Relief	\$ 200,000
California	77907449	Cedars-Sinai Medical Center	Los Angeles	Economic Adjustment Assistance	\$ 2,030,000
California	ED17SEA3020007	Superior California Economic Development, Inc.	Redding	Planning	\$ 75,000
California	ED17SEA3020028	Karuk Community Development Corporation	Happy Camp	Planning	\$ 165,000
California	ED17SEA3020039	The Yuba-Sutter Economic Development Corporation	Yuba City	Planning	\$ 80,000
California	ED17SEA3020046	3Core, Inc.	Chico	Planning	\$ 75,000
California	ED17SEA3020050	Sierra Business Council	Truckee	Planning	\$ 75,000
California	ED17SEA3020055	Sonoma Mendocino Economic Development District	Santa Rosa	Planning	\$ 70,000
California	ED17SEA3030036	The California State University, Chico Research Foundation	Chico	Technical Assistance	\$ 158,971
California	ED18HDQ3130011	University of Southern California	Los Angeles	Trade Adjustment Assistance	\$ 1,373,911
California	ED18SEA3020011	County of Imperial	El Centro	Planning	\$ 70,000
California	ED18SEA3020013	City of Crescent City	Crescent City	Planning	\$ 40,000
California	ED18SEA3020016	Valley Vision, Inc.	Sacramento	Planning	\$ 82,165
California	ED18SEA3030003	Elk Valley Rancheria	Crescent City	Technical Assistance	\$ 56,235
California	ED18SEA3030004	County of Contra Costa	Martinez	Technical Assistance	\$ 37,500
California	ED18SEA3030005	City of Manifee	Sun City	Planning	\$ 50,000
Colorado	5690580501	Region 9 Economic Development District of Southwest Colorado	Durango	Economic Adjustment Assistance	\$ 51,300
Colorado	57905900	Telluride Foundation	Telluride	Assistance to Coal Communities	\$ 844,941
Colorado	ED16DEN3020020	NWCCOG - Economic Development District	Silverthorne	Planning	\$ 70,000
Colorado	ED16DEN3020023	San Luis Valley Development Resources Group	Alamosa	Planning	\$ 70,000
Colorado	ED16DEN3020032	Southern Colorado Economic Development District, Inc.	Pueblo	Planning	\$ 70,000
Colorado	ED16DEN3020058	Region 9 Economic Development District of Southwest Colorado, Inc.	Durango	Planning	\$ 70,000
Colorado	ED16DEN3020079	Region 10 League For Economic Assistance And Planning, Inc.	Montrose	Planning	\$ 70,000
Colorado	ED16DEN3020082	East Central Council of Governments	Stratton	Planning	\$ 70,000
Colorado	ED18DEN3020036	Southern Ute Indian Tribe	Ignacio	Planning	\$ 51,000
Colorado	ED18HDQ3130007	The Regents of The University of Colorado	Boulder	Trade Adjustment Assistance	\$ 1,483,059
Connecticut	ED16PHI3030069	University of Connecticut	Storrs	Technical Assistance	\$ 116,667
Connecticut	ED17PHI3020007	Northwest Hills Council of Governments	Goshen	Planning	\$ 20,000
Connecticut	ED17PHI3030012	Southeastern Connecticut Enterprise Region Corp	Groton	Planning	\$ 70,000
Connecticut	ED17PHI3030013	Shelton Economic Development Corporation	Shelton	Planning	\$ 70,000
Delaware	10114801	Delaware Technical and Community College	Dover	Public Works	\$ 1,975,800
Delaware	ED16PHI3030068	Delaware State University	Dover	Technical Assistance	\$ 116,667
District of Columbia	47907317	International Economic Development Council (IEDC)	Washington	Disaster Relief	\$ 100,000



District of Columbia	66906122	Pan American Development Foundation	Washington	Economic Adjustment Assistance	\$	600,000
District of Columbia	ED16HDQ3030042	Smart Growth America	Washington	Technical Assistance	\$	264,000
District of Columbia	ED18DEN3030018	National Association of Development Organizations Research Foundation	Washington	Technical Assistance	\$	83,975
District of Columbia	ED18HDQ3030014	Smartpower, Inc.	Washington	Technical Assistance	\$	475,565
District of Columbia	ED18HDQ3120012	The Urban Institute	Washington	Research and Evaluation	\$	1,098,990
District of Columbia	ED18PHI3030008	Coalition For Nonprofit Housing And Economic Development	Washington	Technical Assistance	\$	75,000
Florida	40107242	Embry-Riddle Aeronautical University, Inc.	Daytona Beach	Public Works	\$	1,000,000
Florida	46907251	Tampa Bay Regional Planning Council	Pinellas Park	Economic Adjustment Assistance	\$	168,000
Florida	46907252	Southwest Florida Regional Planning Council	Fort Myers	Economic Adjustment Assistance	\$	200,000
Florida	46907253	Central Florida Regional Planning	Bartow	Economic Adjustment Assistance	\$	200,000
Florida	46907254	East Central Florida Regional Planning Council	Orlando	Economic Adjustment Assistance	\$	174,704
Florida	46907255	Northeast Florida Regional Council	Jacksonville	Economic Adjustment Assistance	\$	200,000
Florida	46907257	North Central Florida Regional Planning Council	Gainesville	Economic Adjustment Assistance	\$	200,000
Florida	46907290	City of North Miami	North Miami	Disaster Relief	\$	40,000
Florida	46907297	Central Florida Regional Planning	Bartow	Disaster Relief	\$	240,000
Florida	46907298	Southwest Florida Regional Planning Council	Fort Myers	Disaster Relief	\$	206,545
Florida	47907265	Florida Department of Economic Opportunity	Tallahassee	Economic Adjustment Assistance	\$	424,000
Florida	47907266	Florida Department of Economic Opportunity	Tallahassee	Economic Adjustment Assistance	\$	129,600
Florida	4790726601	Florida Department of Economic Opportunity	Tallahassee	Disaster Relief	\$	52,800
Florida	47907268	Monroe County	Key West	Economic Adjustment Assistance	\$	200,000
Florida	47907271	West Florida Regional Planning Council	Pensacola	Disaster Relief	\$	180,000
Florida	47907306	Florida Department of Economic Opportunity	Tallahassee	Disaster Relief	\$	32,000,000
Florida	ED17ATL3030031	Florida A & M University	Tallahassee	Technical Assistance	\$	118,000
Florida	ED17ATL3030036	University of Florida	Gainesville	Technical Assistance	\$	118,000
Florida	ED18ATL3020004	Central Florida Regional Planning Council	Bartow	Planning	\$	210,000
Florida	ED18ATL3020022	West Florida Regional Planning Council	Pensacola	Planning	\$	210,000
Florida	ED18ATL3020026	South Florida Regional Planning Council	Hollywood	Planning	\$	210,000
Georgia	40107225	Moultrie Colquitt County Development Authority	Moultrie	Public Works	\$	1,860,871
Georgia	40107249	City of Forsyth	Forsyth	Public Works	\$	510,790
Georgia	40107256	City of Chickamauga	Chickamauga	Public Works	\$	720,135
Georgia	47907228	Central Savannah River Area Regional Commission	Augusta	Economic Adjustment Assistance	\$	750,000
Georgia	47907284	City of Hinesville Development Authority	Hinesville	Disaster Relief	\$	750,000
Georgia	47907300	City of Hawkinsville	Hawkinsville	Disaster Relief	\$	1,410,000
Georgia	47907292	UA Associates I LLC	Atlanta	Disaster Relief	\$	1,550,104
Georgia	ED17ATL3030028	Georgia Southern University Research And Service Foundation, Inc.	Statesboro	Technical Assistance	\$	118,000
Georgia	ED17ATL3030029	Georgia Tech Research Corporation	Atlanta	Technical Assistance	\$	120,000
Georgia	ED18ATL3020014	Coastal Regional Commission	Darien	Planning	\$	210,000
Georgia	ED18HDQ3130008	Georgia Tech Research Corporation	Atlanta	Trade Adjustment Assistance	\$	1,243,456
Hawaii	77907437	Hawaii Pacific University	Waimanalo	Economic Adjustment Assistance	\$	166,100
Hawaii	77907445	University of Hawaii Systems	Honolulu	Economic Adjustment Assistance	\$	210,000
Hawaii	ED17SEA3030023	University of Hawaii Systems	Honolulu	Technical Assistance	\$	125,000
Hawaii	ED18SEA3020014	Pacific Basin Development Council	Honolulu	Planning	\$	85,000
Idaho	7010693201	East Central Idaho Planning and Development Association, Inc.	Rexburg	Public Works	\$	789,000
Idaho	70107454	Idaho Rural Water Association	Boise	Public Works	\$	1,447,200
Idaho	77907434	Clearwater Economic Development Association	Lewiston	Economic Adjustment Assistance	\$	50,000
Idaho	77907448	Independent School District No. 1 of Nez Perce County, Idaho	Lewiston	Economic Adjustment Assistance	\$	661,944
Idaho	77907450	Lewis-Clark State College	Lewiston	Economic Adjustment Assistance	\$	1,521,400
Idaho	ED17SEA3020020	Southeast Idaho Council of Governments, Inc.	Pocatello	Planning	\$	75,000
Idaho	ED17SEA3020025	Region IV Development Association Inc	Twin Falls	Planning	\$	75,000
Idaho	ED17SEA3020030	The Coeur D'Alene Tribe	Plummer	Planning	\$	195,000
Idaho	ED17SEA3020031	Clearwater Economic Development Association, Inc.	Lewiston	Planning	\$	75,000
Idaho	ED17SEA3020033	East-Central Idaho Planning & Development Association, Inc	Rexburg	Planning	\$	75,000
Idaho	ED17SEA3020037	Panhandle Area Council Inc.	Hayden	Planning	\$	70,000
Idaho	ED17SEA3020062	Nez Perce Tribe	Lapwai	Planning	\$	180,000
Idaho	ED17SEA3030026	Boise State University	Boise	Technical Assistance	\$	125,000
Idaho	ED18SEA3020008	Shoshone-Bannock Tribes of The Fort Hall Reservation of Idaho	Fort Hall	Planning	\$	180,000
Illinois	60106096	Greenville College	Greenville	Public Works	\$	999,968
Illinois	60106101	Taylorville Development Association	Taylorville	Public Works	\$	537,288
Illinois	60106103	City of Carmi	Carmi	Public Works	\$	512,680
Illinois	60106106	City of Waukegan	Waukegan	Public Works	\$	2,142,247
Illinois	60106110	Southern Illinois Airport Authority	Carbondale	Public Works	\$	3,750,000
Illinois	67906097	Prairie State College	Chicago Heights	Economic Adjustment Assistance	\$	938,447
Illinois	67906108	America's Central Port District	Granite City	Economic Adjustment Assistance	\$	2,272,895
Illinois	67906113	Illinois Eastern Community Colleges District 529	Olney	Economic Adjustment Assistance	\$	300,000
Illinois	ED16CHI3030029	University of Illinois	Chicago	Technical Assistance	\$	54,000
Illinois	ED16CHI3030031	University of Illinois	Urbana	Technical Assistance	\$	54,000
Illinois	ED17CHI3020010	South Central Illinois Regional Planning & Development Commission	Salem	Planning	\$	70,000
Illinois	ED18CHI3020004	Southern Five Regional Planning District & Development Commission	Ulin	Planning	\$	210,000
Illinois	ED18CHI3020006	Blackhawk Hills Resource Conservation & Development	Rock Falls	Planning	\$	70,000
Illinois	ED18CHI3020007	Greater Wabash Regional Planning Commission	Albion	Planning	\$	210,000
Illinois	ED18CHI3020009	Southeastern Illinois Regional Planning & Development Commission	Harrisburg	Planning	\$	210,000
Illinois	ED18CHI3020014	Southwestern Illinois Metropolitan & Regional Planning Commission	Fairview Heights	Planning	\$	210,000
Illinois	ED18CHI3020016	North Central Illinois Council of Governments	Ottawa	Planning	\$	70,000
Illinois	ED18CHI3020019	Western Illinois Regional Council	Macomb	Planning	\$	70,000
Illinois	ED18CHI3020022	Two Rivers Regional Council of Public officials	Quincy	Planning	\$	70,000
Illinois	ED18CHI3020027	The Greater Peoria Area Economic Development Council	Peoria	Planning	\$	70,000
Illinois	ED18CHI3020029	Chicago Southland Economic Development Corporatio	Hazel Crest	Planning	\$	60,774
Illinois	ED18HDQ3130003	Applied Strategies International Ltd.	Chicago	Trade Adjustment Assistance	\$	1,090,998
Indiana	ED16CHI3030033	Purdue University	West Lafayette	Technical Assistance	\$	160,000
Indiana	ED18SEA3020012	Michiana Area Council of Governments	South Bend	Planning	\$	70,000
Indiana	ED18CHI3030024	Southern Indiana Development Commission	Loogootee	Technical Assistance	\$	50,000
Indiana	ED18CHI3030030	Ball State University	Muncie	Planning	\$	884,393
Iowa	50105898	Iowa State University Research Park	Ames	Public Works	\$	1,743,558
Iowa	56905906	City of Marshalltown	Marshalltown	Economic Adjustment Assistance	\$	100,000
Iowa	57905903	City of Peosta	Peosta	Disaster Relief	\$	3,000,000
Iowa	ED16DEN3020001	East Central Intergovernment Association	Dubuque	Planning	\$	70,000
Iowa	ED16DEN3020007	Region 6 Planning Commission	Marshalltown	Planning	\$	70,000
Iowa	ED16DEN3020045	Southern Iowa Council of Governments, Inc	Creston	Planning	\$	70,000
Iowa	ED16DEN3020049	Mid Iowa Development Association Council of Governments	Fort Dodge	Planning	\$	70,000
Iowa	ED16DEN3020054	East Central Iowa Council of Governments	Cedar Rapids	Planning	\$	70,000
Iowa	ED16DEN3020055	North Iowa Area Council of Governments	Mason City	Planning	\$	70,000
Iowa	ED16DEN3020056	Region XII Council of Governments, Inc	Carroll	Planning	\$	70,000
Iowa	ED16DEN3020057	Siouxland Interstate Metropolitan Planning Council	Sioux City	Planning	\$	70,000
Iowa	ED16DEN3020060	Northwest Iowa Planning & Development Commission	Spencer	Planning	\$	70,000

Iowa	ED16DEN3020061	Upper Explorerland Regional Planning Commission	Postville	Planning	\$	70,000
Iowa	ED16DEN3020067	Area 15 Regional Planning Commission	Ottumwa	Planning	\$	70,000
Iowa	ED16DEN3020070	Iowa Northland Regional Council of Governments	Waterloo	Planning	\$	70,000
Iowa	ED16DEN3020071	Southeast Iowa Regional Planning Commission	West Burlington	Planning	\$	70,000
Iowa	ED18DEN3020001	Upper Explorerland Regional Planning Commission	Postville	Planning	\$	40,000
Iowa	ED18DEN3020004	East Central Intergovernment Association	Dubuque	Planning	\$	40,000
Iowa	ED18DEN3020005	Sioudland Interstate Metropolitan Planning Council	Sioux City	Planning	\$	25,000
Iowa	ED18DEN3020009	Southwest Iowa Planning Council	Atlantic	Planning	\$	210,000
Iowa	ED18DEN3030019	Iowa State University of Science And Technology	Ames	Technical Assistance	\$	138,000
Iowa	ED18DEN3030020	University of Northern Iowa	Cedar Falls	Technical Assistance	\$	131,000
Kansas	50105884	City of Emporia	Emporia	Public Works	\$	1,341,000
Kansas	50105885	City of Sterling	Sterling	Public Works	\$	247,609
Kansas	ED16DEN3020009	Great Plains Development	Dodge City	Planning	\$	70,000
Kansas	ED16DEN3020010	Northwest Kansas Planning & Development Commission	Hill City	Planning	\$	70,000
Kansas	ED16DEN3020019	South Central Kansas Economic Development District, Inc.	Bel Aire	Planning	\$	70,000
Kansas	ED16DEN3020043	North Central Regional Planning Commission	Beloit	Planning	\$	70,000
Kansas	ED16DEN3020068	Southeast Kansas Regional Planning Commission	Chanate	Planning	\$	70,000
Kansas	ED16DEN3020092	Flint Hills Regional Council, Inc.	Fort Riley	Planning	\$	70,000
Kansas	ED18DEN3020002	North Central Regional Planning Commission	Beloit	Planning	\$	25,000
Kansas	ED18DEN3030003	Pittsburg State University	Pittsburg	Technical Assistance	\$	40,000
Kansas	ED18DEN3030026	Kansas State University	Manhattan	Technical Assistance	\$	162,500
Kansas	ED18DEN3030031	University of Kansas Center For Research, Inc.	Lawrence	Technical Assistance	\$	140,000
Kentucky	40107240	Simpson County Water District	Franklin	Public Works	\$	665,000
Kentucky	40107303	City of Carrollton	Carrollton	Public Works	\$	820,000
Kentucky	46907259	Perry County Fiscal Court	Hazard	Assistance to Coal Communities	\$	60,000
Kentucky	46907280	Pike County Fiscal Court	Pikeville	Assistance to Coal Communities	\$	59,500
Kentucky	46907301	FIVCO Area Development District	Grayson	Assistance to Coal Communities	\$	50,000
Kentucky	4790709802	WestCare Kentucky, Inc.	Ashcamp	Economic Adjustment Assistance	\$	330,790
Kentucky	47907247	Henderson County Fiscal Court	Henderson	Assistance to Coal Communities	\$	990,700
Kentucky	47907258	City of Jackson	Jackson	Assistance to Coal Communities	\$	1,156,419
Kentucky	47907273	Kentucky Community and Technical College System	Versailles	Assistance to Coal Communities	\$	2,561,376
Kentucky	47907293	McCreary County Heritage Foundation, Inc.	Stearns	Assistance to Coal Communities	\$	2,000,000
Kentucky	47907302	City of Hazard	Hazard	Assistance to Coal Communities	\$	1,484,000
Kentucky	ED17ATL3030032	University of Kentucky	Lexington	Technical Assistance	\$	118,000
Kentucky	ED18ATL3020027	Commonwealth of Kentucky - Department For Local Government	Frankfort	Planning	\$	1,050,000
Louisiana	80105231	Louisiana State University	Baton Rouge	Public Works	\$	1,100,000
Louisiana	80105240	West St Mary Parish Port Harbor and Terminal District	Franklin	Public Works	\$	1,300,000
Louisiana	80105246	Central Louisiana Economic Development Alliance	Alexandria	Public Works	\$	400,000
Louisiana	86905253	Biomedical Research Foundation of NW Louisiana	Shreveport	Economic Adjustment Assistance	\$	600,000
Louisiana	87905245	Imperial Calcasieu Regional Planning & Development Commission	Lake Charles	Disaster Relief	\$	159,000
Louisiana	87905261	Regional Planning Commission	New Orleans	Economic Adjustment Assistance	\$	159,000
Louisiana	87905269	South Central Planning and Development Commission, Inc.	Houma	Disaster Relief	\$	159,000
Louisiana	ED18AU3020003	Acadiana Planning Commission, Inc.	Lafayette	Planning	\$	87,500
Louisiana	ED18AU3030030	University of Louisiana At Lafayette	Lafayette	Technical Assistance	\$	112,850
Louisiana	ED18AU3030031	Southern University And Agricultural & Mechanical College System	Baton Rouge	Technical Assistance	\$	112,850
Maine	10114790	Town of Hartland	Hartland	Public Works	\$	1,930,000
Maine	10114799	Midcoast Regional Redevelopment Authority	Brunswick	Public Works	\$	615,000
Maine	10114806	City of Rockland	Rockland	Public Works	\$	830,000
Maine	17914811	Northern Maine Development Commission	Caribou	Economic Adjustment Assistance	\$	195,000
Maine	17914834	Our Katahdin	Millinocket	Disaster Relief	\$	5,348,810
Maine	ED16PHI3020022	Androscoggin Valley Council of Governments	Auburn	Planning	\$	70,000
Maine	ED16PHI3020026	Northern Maine Development Commission, Inc	Caribou	Planning	\$	70,000
Maine	ED16PHI3020029	Kennebec Valley Council of Governments	Fairfield	Planning	\$	70,000
Maine	ED16PHI3020030	Eastern Maine Development Corporation	Bangor	Planning	\$	70,000
Maine	ED16PHI3020066	Penobscot Indian Nation	Indian Island	Planning	\$	44,500
Maine	ED16PHI3020076	Greater Portland Council of Governments	Portland	Planning	\$	70,000
Maine	ED16PHI3020077	Southern Maine Planning And Development Commission (Smpdc)	Saco	Planning	\$	70,000
Maine	ED16PHI3020078	Midcoast Economic Development District	Damariscotta	Planning	\$	70,000
Maine	ED16PHI3030070	University of Maine System	Portland	Technical Assistance	\$	116,667
Maine	ED18PHI3020004	Engine Propelling The Creative Community	Biddeford	Planning	\$	25,000
Maine	ED18PHI3030003	Kennebec Valley Council of Governments	Fairfield	Technical Assistance	\$	61,000
Maryland	10114817	Town of Easton	Easton	Public Works	\$	2,282,750
Maryland	ED16PHI3020007	Tri County Council For Western Maryland Inc	Frostburg	Planning	\$	70,000
Maryland	ED16PHI3020037	Tri-County Council For The Lower Eastern Shore of Maryland	Salsbury	Planning	\$	70,000
Maryland	ED16PHI3020038	Mid Shore Regional Council	Easton	Planning	\$	70,000
Maryland	ED16PHI3030075	University of Maryland	College Park	Technical Assistance	\$	116,667
Massachusetts	10114797	City of Chelsea	Chelsea	Public Works	\$	3,000,000
Massachusetts	17914813	University of Massachusetts Dartmouth	North Dartmouth	Economic Adjustment Assistance	\$	600,000
Massachusetts	17914825	Town of Somerset	Somerset	Assistance to Coal Communities	\$	330,566
Massachusetts	ED16PHI3020008	Southeastern Regional Planning & Economic Development District	Taunton	Planning	\$	70,000
Massachusetts	ED16PHI3020021	Old Colony Planning Council	Brocton	Planning	\$	70,000
Massachusetts	ED16PHI3020034	Montachusett Regional Planning Commission	Leominster	Planning	\$	70,000
Massachusetts	ED16PHI3020057	Franklin Regional Council of Governments	Greenfield	Planning	\$	70,000
Massachusetts	ED16PHI3020059	Metropolitan Area Planning Council	Boston	Planning	\$	70,000
Massachusetts	ED16PHI3020061	Pioneer Valley Planning Commission	Springfield	Planning	\$	70,000
Massachusetts	ED16PHI3020062	Merrimack Valley Planning Commission	Haverhill	Planning	\$	70,000
Massachusetts	ED16PHI3030067	Becker College	Worcester	Technical Assistance	\$	116,667
Massachusetts	ED18HDQ3130001	New England Trade Adjustment Assistance Center, Inc.	North Billerica	Trade Adjustment Assistance	\$	1,027,467
Massachusetts	ED18PHI3020012	County of Barnstable	Barnstable	Planning	\$	70,000
Michigan	60106100	City of Coopersville	Coopersville	Public Works	\$	2,167,200
Michigan	60106102	Saginaw County Road Commission	Saginaw	Public Works	\$	2,000,000
Michigan	60106107	City of Fremont	Fremont	Public Works	\$	738,425
Michigan	66906099	City of Luna Pier	Luna Pier	Economic Adjustment Assistance	\$	40,000
Michigan	ED16CHI3030032	Regents of The University of Michigan	Ann Arbor	Technical Assistance	\$	80,000
Michigan	ED16CHI3030037	Michigan State University	East Lansing	Technical Assistance	\$	150,000
Michigan	ED18CHI3020003	Western Upper Peninsula Planning & Development Region Commission	Hancock	Planning	\$	210,000
Michigan	ED18CHI3020011	Northwest Michigan Council of Governments	Traverse City	Planning	\$	210,000
Michigan	ED18CHI3020013	Inter-Tribal Council of Michigan, Inc	Sault Sainte Marie	Planning	\$	153,000
Michigan	ED18CHI3020020	Region II Planning Commission	Jackson	Planning	\$	35,000
Michigan	ED18CHI3020026	Southeast Michigan Community Alliance, Inc.	Taylor	Planning	\$	50,000
Michigan	ED18CHI3030025	Southwestern Michigan Commission	Benton Harbor	Technical Assistance	\$	12,000
Michigan	ED18CHI3030031	Eastern Upper Peninsula Intermediate School District	Sault Sainte Marie	Planning	\$	75,000
Michigan	ED18HDQ3130005	Regents of The University of Michigan	Ann Arbor	Trade Adjustment Assistance	\$	1,075,632
Minnesota	6010607801	Benidji Regional Authority	Benidji	Public Works	\$	200,000
Minnesota	60106119	Lower Sioux Indian Community	Morton	Public Works	\$	4,490,615
Minnesota	66906109	White Earth Band of Ojibwe Indians	White Earth	Economic Adjustment Assistance	\$	100,000
Minnesota	66906121	City of St. Cloud	St. Cloud	Economic Adjustment Assistance	\$	112,858
Minnesota	ED16CHI3030035	Regents of The University of Minnesota	Minneapolis	Technical Assistance	\$	160,373
Minnesota	ED18CHI3020002	Region Five Development Commission	Staples	Planning	\$	210,000
Minnesota	ED18CHI3020008	Region 9 Development Commission	Mankato	Planning	\$	210,000
Minnesota	ED18CHI3020010	Upper Minnesota Valley Regional Development Commission	Appleton	Planning	\$	210,000

Minnesota	ED18CHI3020015	Arrowhead Regional Development Commission	Duluth	Planning	\$	70,000
Minnesota	ED18CHI3020017	West Central Initiative	Fergus Falls	Planning	\$	210,000
Minnesota	ED18CHI3030032	Regents of The University of Minnesota	Minneapolis	Planning	\$	299,997
Mississippi	40107246	MS State University Research & Technology Corporation	Starkville	Public Works	\$	1,815,000
Mississippi	40107267	City of Baldwin	Baldwyn	Public Works	\$	1,555,675
Mississippi	47907282	The University of Mississippi	University	Economic Adjustment Assistance	\$	83,391
Mississippi	47907287	Southern Mississippi Planning and Development District	Gulfport	Disaster Relief	\$	1,000,000
Mississippi	47907296	City of Corinth	Corinth	Economic Adjustment Assistance	\$	1,500,000
Mississippi	ED16ATL3020002	Central Mississippi Planning & Development District Inc	Jackson	Planning	\$	2,000
Mississippi	ED17ATL3030033	Mississippi State University	Mississippi State	Technical Assistance	\$	118,000
Mississippi	ED18ATL3020015	East Central Planning & Development Inc	Newton	Planning	\$	210,000
Mississippi	ED18ATL3020018	Golden Triangle Planning & Development District	Starkville	Planning	\$	210,000
Mississippi	ED18ATL3020023	Northeast Planning & Development District	Booneville	Planning	\$	210,000
Mississippi	ED18ATL3020025	North Central Planning & Development District (Inc)	Winona	Planning	\$	210,000
Missouri	50105881	Cox College	Springfield	Public Works	\$	2,230,186
Missouri	50105886	City of Piedmont	Piedmont	Public Works	\$	500,000
Missouri	56905907	Ozark Foothills Regional Planning Commission	Poplar Bluff	Disaster Relief	\$	96,000
Missouri	57905896	Technology Entrepreneur Center, Inc.	St. Louis	Economic Adjustment Assistance	\$	500,000
Missouri	57905904	City of Potosi	Potosi	Economic Adjustment Assistance	\$	1,729,940
Missouri	ED16DEN3020005	Meramec Regional Planning Commission	Saint James	Planning	\$	70,000
Missouri	ED16DEN3020006	Southeast Missouri Regional Planning & Economic Development	Perryville	Planning	\$	70,000
Missouri	ED16DEN3020008	Bootheel Regional Planning & Economic Development Commission	Dexter	Planning	\$	70,000
Missouri	ED16DEN3020013	South Central Ozark Council of Governments	Pomona	Planning	\$	70,000
Missouri	ED16DEN3020044	Lake of The Ozarks Council of Local Governments	Camdenton	Planning	\$	70,000
Missouri	ED16DEN3020046	Northwest Missouri Regional Council of Governments	Maryville	Planning	\$	70,000
Missouri	ED16DEN3020047	Mo-Kan Regional Council	Saint Joseph	Planning	\$	70,000
Missouri	ED16DEN3020048	Ozark Foothills Regional Planning Commission	Poplar Bluff	Planning	\$	70,000
Missouri	ED16DEN3020059	Kaysinger Basin Regional Planning Commission	Clinton	Planning	\$	70,000
Missouri	ED16DEN3020062	Northeast Missouri Regional Planning Commission	Memphis	Planning	\$	70,000
Missouri	ED16DEN3020064	Mark Twain Regional Council of Governments	Perry	Planning	\$	70,000
Missouri	ED16DEN3020066	Green Hills Regional Planning Commission	Trenton	Planning	\$	70,000
Missouri	ED16DEN3020069	Harry S Truman Coordinating Council	Carl Junction	Planning	\$	70,000
Missouri	ED16DEN3020072	Boonslick Regional Planning Commission	Warrenton	Planning	\$	70,000
Missouri	ED18DEN3020008	Pioneer Trails Regional Planning Commission	Concordia	Planning	\$	210,000
Missouri	ED18DEN3020010	Mid-America Regional Council Community Services Corporation	Kansas City	Planning	\$	210,000
Missouri	ED18DEN3020013	Mid-Missouri Regional Planning Commission	Ashland	Planning	\$	210,000
Missouri	ED18DEN3020015	Southeast Missouri Regional Planning & Economic Development	Perryville	Planning	\$	210,000
Missouri	ED18DEN3020016	South Central Ozark Council of Governments	Pomona	Planning	\$	210,000
Missouri	ED18DEN3020017	Meramec Regional Planning Commission	Saint James	Planning	\$	210,000
Missouri	ED18DEN3020007	Hardisty Renaissance Economic Development Corporation	Kansas City	Technical Assistance	\$	53,125
Missouri	ED18DEN3030029	University of Missouri System	Kansas City	Technical Assistance	\$	162,500
Missouri	ED18HDQ3130009	University of Missouri System	Columbia	Trade Adjustment Assistance	\$	1,128,913
Montana	50105883	Interbel Telephone Cooperative	Eureka	Public Works	\$	486,000
Montana	56905887	Northern Cheyenne Tribe	Lame Deer	Economic Adjustment Assistance	\$	130,596
Montana	57905897	Snowy Mountain Development Corporation	Lewistown	Economic Adjustment Assistance	\$	250,000
Montana	ED16DEN3020003	Confederated Salish And Kootenai Tribes	Pablo	Planning	\$	51,000
Montana	ED16DEN3020011	Northern Rocky Mountain Economic Development District	Bozeman	Planning	\$	70,000
Montana	ED16DEN3020022	North Central Montana Economic Development District, Inc.	Great Falls	Planning	\$	70,000
Montana	ED16DEN3020025	Bear Paw Development Corporation of Northern Montana	Havre	Planning	\$	70,000
Montana	ED16DEN3020027	Beartooth Resource Conservation & Development Area Inc	Joliet	Planning	\$	70,000
Montana	ED16DEN3020028	Southeastern Montana Development Corporation	Colstrip	Planning	\$	70,000
Montana	ED16DEN3020029	Montana Business Assistance Connection Inc	Helena	Planning	\$	70,000
Montana	ED16DEN3020039	Blackfeet Tribe of The Blackfeet Indian Reservation	Browning	Planning	\$	51,000
Montana	ED16DEN3020075	Headwaters Resource Conservation & Development Area Inc	Butte	Planning	\$	70,000
Montana	ED16DEN3020076	Eastern Plains Economic Development Corporation	Sidney	Planning	\$	70,000
Montana	ED16DEN3020077	Snowy Mountain Development Corporation	Lewistown	Planning	\$	70,000
Montana	ED16DEN3020086	Great Northern Development Corporation	Wolf Point	Planning	\$	70,000
Montana	ED16DEN3020098	The Chippewa Cree Tribe of The Rocky Boy Reservation	Box Elder	Planning	\$	51,000
Montana	ED16DEN3020102	Crow Tribe of Indians	Crow Agency	Planning	\$	51,000
Montana	ED16DEN3020104	Fort Peck Assinboine & Sioux Tribes	Poplar	Planning	\$	51,000
Montana	ED18DEN3020014	Northern Rocky Mountain Economic Development District	Bozeman	Planning	\$	50,000
Montana	ED18DEN3020024	Southeastern Montana Development Corporation	Colstrip	Planning	\$	210,000
Montana	ED18DEN3020030	Beartooth Resource Conservation & Development Area Inc	Joliet	Planning	\$	210,000
Montana	ED18DEN3020033	Bear Paw Development Corporation of Northern Montana	Havre	Planning	\$	210,000
Montana	ED18DEN3020034	North Central Montana Economic Development District, Inc.	Great Falls	Planning	\$	210,000
Montana	ED18DEN3030032	University of Montana	Missoula	Technical Assistance	\$	146,000
Nebraska	50105882	City of Gothenburg	Gothenburg	Public Works	\$	615,673
Nebraska	50105893	Metropolitan Community College	Omaha	Public Works	\$	393,812
Nebraska	ED16DEN3020014	South Central Economic Development District, Inc.	Holdrege	Planning	\$	70,000
Nebraska	ED16DEN3020042	West Central Nebraska Development District, Inc.	Ogallala	Planning	\$	70,000
Nebraska	ED16DEN3020074	Central Nebraska Economic Development District	Chambers	Planning	\$	70,000



Nebraska	ED16DEN3020080	Panhandle Area Development District	Scottsbluff	Planning	\$	70,000
Nebraska	ED16DEN3020081	Southeast Nebraska Development District	Lincoln	Planning	\$	70,000
Nebraska	ED18DEN3020011	Northeast Nebraska Economic Development District	Norfolk	Planning	\$	210,000
Nebraska	ED18DEN3020012	Omaha-Council Bluffs Metropolitan Area Planning Agency	Omaha	Planning	\$	210,000
Nebraska	ED18DEN3030027	University of Nebraska	Omaha	Technical Assistance	\$	112,000
Nevada	77907435	Tahoe Prosperity Center	Incline Village	Economic Adjustment Assistance	\$	80,000
Nevada	ED17SEA3020063	Western Nevada Development District	Carson City	Planning	\$	80,000
Nevada	ED17SEA3030034	Nevada System of Higher Education	Reno	Technical Assistance	\$	125,000
New Hampshire	ED16PHI3020013	North Country Council Inc	Littleton	Planning	\$	70,000
New Hampshire	ED16PHI3020031	Rockingham Economic Development Corporation	Raymond	Planning	\$	70,000
New Hampshire	ED18PHI3020002	New Hampshire Department of Business And Economic Affairs	Concord	Planning	\$	140,000
New Jersey	10114804	The Borough of Paulsboro	Paulsboro	Public Works	\$	1,416,805
New Jersey	10114807	Cape May County, New Jersey	Cape May Court House	Public Works	\$	3,000,000
New Jersey	ED16PHI3020020	South Jersey Economic Development District, Inc.	Vineland	Planning	\$	70,000
New Jersey	ED16PHI3030063	The State University of New Jersey, Rutgers	Newark	Technical Assistance	\$	116,667
New Mexico	80105220	City of Roswell	Roswell	Public Works	\$	800,000
New Mexico	80105232	Partnership for Community Action	Albuquerque	Public Works	\$	1,000,000
New Mexico	80105243	Village of Los Lunas	Los Lunas	Public Works	\$	1,300,000
New Mexico	86905244	City of Las Cruces	Las Cruces	Economic Adjustment Assistance	\$	250,000
New Mexico	87905219	Jicarilla Apache Nation	Dulce	Economic Adjustment Assistance	\$	550,000
New Mexico	87905223	ICAST	Albuquerque	Economic Adjustment Assistance	\$	300,000
New Mexico	87905263	Navajo Technical University	Crowpoint	Assistance to Coal Communities	\$	1,000,300
New Mexico	ED18AUS3020019	North Central New Mexico Economic Development District	Santa Fe	Planning	\$	70,000
New Mexico	ED18AUS3030032	San Juan College	Farmington	Technical Assistance	\$	112,850
New Mexico	ED18AUS3030034	Science and Technology Corporation, University of New Mexico	Albuquerque	Technical Assistance	\$	112,850
New York	10114789	Hudson Valley Community College	Troy	Public Works	\$	1,500,000
New York	10114793	The Research Foundation for The State University of New York at Alfred	Alfred	Public Works	\$	1,500,000
New York	10114800	Jefferson County Industrial Development Agency	Watertown	Public Works	\$	703,000
New York	ED16PHI3020001	Southern Tier East Regional Planning Development Board	Binghamton	Planning	\$	70,000
New York	ED16PHI3020004	Genesee Finger Lakes Regional Planning Council	Rochester	Planning	\$	70,000
New York	ED16PHI3020005	Central New York Regional Planning & Development Board	Syracuse	Planning	\$	70,000
New York	ED16PHI3020014	Southern Tier West Regional Planning & Development Board	Salamanca	Planning	\$	70,000
New York	ED16PHI3020017	Lake Champlain Lake George Regional Planning Board	Lake George	Planning	\$	70,000
New York	ED16PHI3020018	Mohawk Valley Economic Development District, Inc.	Mohawk	Planning	\$	70,000
New York	ED16PHI3020023	Southern Tier Central Regional Planning And Development Board	Corning	Planning	\$	70,000
New York	ED16PHI3020048	Capital District Regional Planning Commission	Albany	Planning	\$	70,000
New York	ED16PHI3020050	Seneca Nation of Indians	Salamanca	Planning	\$	46,520
New York	ED16PHI3020084	Hudson Valley Regional Council, Inc.	Newburgh	Planning	\$	70,000
New York	ED16PHI3020085	Saint Regis Mohawk Tribe	Hogansburg	Planning	\$	47,000
New York	ED16PHI3030071	The Research Foundation for The State University of New York	Albany	Technical Assistance	\$	116,667
New York	ED16PHI3030074	University of Rochester	Rochester	Technical Assistance	\$	116,667
New York	ED18HDQ3130004	The Research Foundation For The State University of New York	Binghamton	Trade Adjustment Assistance	\$	989,488
New York	ED18PHI3030001	The Hudson Valley Agri-Business Development Corporation	Hudson	Technical Assistance	\$	100,000
North Carolina	40107184	Town of Black Mountain	Black Mountain	Public Works	\$	827,580
North Carolina	40107243	Davie County	Mocksville	Public Works	\$	2,000,000
North Carolina	40107244	Halifax Community College	Weldon	Public Works	\$	2,000,000
North Carolina	40107269	City of Claremont	Claremont	Public Works	\$	2,000,000
North Carolina	40107277	Jackson County	Sylva	Public Works	\$	2,015,395
North Carolina	46907281	Maritime Heritage Foundation of Beaufort, North Carolina, Inc.	Beaufort	Economic Adjustment Assistance	\$	30,000
North Carolina	47907270	James Sprunt Community College	Kenansville	Disaster Relief	\$	2,031,480
North Carolina	47907283	Centralna Economic Development Commission, Inc.	Charlotte	Economic Adjustment Assistance	\$	40,000
North Carolina	ED17ATL3020005	Southwestern Nc Planning & Economic Development Commission	Sylva	Planning	\$	2,000
North Carolina	ED17ATL3030034	Fayetteville State University	Fayetteville	Technical Assistance	\$	118,000
North Carolina	ED17ATL3030035	Western Carolina University	Cullowhee	Technical Assistance	\$	118,000
North Carolina	ED17ATL3030039	University of North Carolina At Chapel Hill	Chapel Hill	Technical Assistance	\$	118,000
North Carolina	ED18ATL3020006	Neuse River Council of Governments	New Bern	Planning	\$	210,000
North Carolina	ED18ATL3020009	Southeastern Economic Development Commission	Elizabethtown	Planning	\$	210,000
North Carolina	ED18ATL3020013	Mid-East Commission	Washington	Planning	\$	210,000
North Carolina	ED18ATL3020016	Piedmont Triad Regional Development Corporation	Kernersville	Planning	\$	210,000
North Carolina	ED18ATL3020019	Land of Sky Regional Council	Asheville	Planning	\$	210,000
North Carolina	ED18ATL3020020	Upper Coastal Plain Council of Governments	Wilson	Planning	\$	210,000
North Carolina	ED18ATL3020028	Triangle J Council of Governments	Durham	Planning	\$	50,000
North Carolina	ED18ATL3020029	North Carolina Coastal Federation, Inc.	Newport	Planning	\$	48,036
North Dakota	ED16DEN3020015	North Central Planning Council	Devils Lake	Planning	\$	70,000
North Dakota	ED16DEN3020016	Standing Rock Sioux Tribe	Fort Yates	Planning	\$	51,000
North Dakota	ED16DEN3020017	Lake Agassiz Regional Council	Fargo	Planning	\$	70,000
North Dakota	ED16DEN3020018	Lewis And Clark Regional Development Council	Mandan	Planning	\$	70,000
North Dakota	ED16DEN3020026	Souris Basin Planning Council	Minot	Planning	\$	70,000
North Dakota	ED16DEN3020038	South Central Dakota Regional Council	Jamesstown	Planning	\$	70,000
North Dakota	ED16DEN3020040	Tri County Regional Development Council	Williston	Planning	\$	70,000
North Dakota	ED16DEN3020073	Red River Regional Council	Grafton	Planning	\$	70,000
North Dakota	ED16DEN3020093	Turtle Mountain Band of Chippewa Indians	Belcourt	Planning	\$	51,000
North Dakota	ED16DEN3020094	Spirit Lake Tribe	Fort Totten	Planning	\$	51,000
North Dakota	ED16DEN3020105	Three Affiliated Tribes	New Town	Planning	\$	51,000
North Dakota	ED18DEN3020021	Souris Basin Planning Council	Minot	Planning	\$	210,000
North Dakota	ED18DEN3020022	Lewis And Clark Regional Development Council	Mandan	Planning	\$	210,000
North Dakota	ED18DEN3020023	North Central Planning Council	Devils Lake	Planning	\$	210,000
North Dakota	ED18DEN3020037	Lake Agassiz Regional Council	Fargo	Planning	\$	210,000
North Dakota	ED18DEN3020038	Standing Rock Sioux Tribe	Fort Yates	Planning	\$	51,000
North Dakota	ED18DEN3030028	University of North Dakota	Grand Forks	Technical Assistance	\$	100,000

Ohio	60106104	Village of Delta	Delta	Public Works	\$	958,885
Ohio	6790608901	Youngstown State University	Youngstown	Assistance to Coal Communities	\$	1,071,204
Ohio	67906118	Shawnee State University	Portsmouth	Assistance to Coal Communities	\$	2,793,392
Ohio	67906120	Ohio University	Athens	Assistance to Coal Communities	\$	1,603,204
Ohio	ED16CHI3030034	Bowling Green State University	Bowling Green	Technical Assistance	\$	150,000
Ohio	ED16CHI3030036	Cleveland State University	Cleveland	Technical Assistance	\$	80,000
Ohio	ED16PHI3020052	Region 11 Council	Steubenville	Planning	\$	70,000
Ohio	ED18CHI3030023	The Ohio State University	Columbus	Technical Assistance	\$	28,205
Oklahoma	80105221	City of Sapulpa	Sapulpa	Public Works	\$	1,500,000
Oklahoma	80105267	City of Sallisaw	Sallisaw	Public Works	\$	490,000
Oklahoma	86905241	Keetoowah Economic Development Authority	Tablequah	Economic Adjustment Assistance	\$	277,184
Oklahoma	ED18AUS3020020	Kiamichi Economic Development District of Oklahoma	Wiburton	Planning	\$	70,000
Oklahoma	ED18AUS3030026	Pawnee Tribe of Oklahoma Inc	Pawnee	Planning	\$	64,000
Oklahoma	ED18AUS3030036	University of Oklahoma	Norman	Technical Assistance	\$	112,850
Oregon	70107439	City of Silverton	Silverton	Public Works	\$	1,150,000
Oregon	70107446	Oregon Institute of Technology	Klamath Falls	Public Works	\$	2,984,514
Oregon	ED17SEA3020005	C C D Business Development Corppration	Roseburg	Planning	\$	75,000
Oregon	ED17SEA3020009	Coquille Indian Tribe	North Bend	Planning	\$	180,000
Oregon	ED17SEA3020013	Mid-Columbia Economic Development District	The Dalles	Planning	\$	85,000
Oregon	ED17SEA3020014	Greater Eastern Oregon Development Corporation	Pendleton	Planning	\$	75,000
Oregon	ED17SEA3020019	Central Oregon Intergovernmental Council	Bend	Planning	\$	75,000
Oregon	ED17SEA3020021	Confederated Tribes of The Umatilla Indian Reservation	Pendleton	Planning	\$	180,000
Oregon	ED17SEA3020022	Oregon Cascades West Council of Government Inc	Albany	Planning	\$	75,000
Oregon	ED17SEA3020041	Burns Paiute Tribe	Burns	Planning	\$	150,000
Oregon	ED17SEA3020042	South Central Oregon Economic Development District	Klamath Falls	Planning	\$	75,000
Oregon	ED17SEA3020043	Northeast Oregon Economic Development District	Enterprise	Planning	\$	75,000
Oregon	ED17SEA3020045	The Confederated Tribes of Siletz Indians	Siletz	Planning	\$	180,000
Oregon	ED17SEA3020047	Greater Portland Economic Development District, Inc.	Portland	Planning	\$	75,000
Oregon	ED17SEA3020048	Columbia-Pacific Economic Development District of Oregon	Saint Helens	Planning	\$	75,000
Oregon	ED17SEA3020049	Affiliated Tribes of Northwest Indians Economic Development Corporation	Portland	Planning	\$	225,000
Oregon	ED17SEA3020051	Mid-Willamette Valley Council of Governments	Salem	Planning	\$	75,000
Oregon	ED17SEA3020077	Southern Oregon Regional Economic Development, Inc.	Medford	Planning	\$	75,000
Oregon	ED17SEA3030029	University of Oregon	Eugene	Technical Assistance	\$	143,025
Oregon	ED18SEA3020015	City of John Day	John Day	Planning	\$	70,000
Oregon	ED18SEA3030001	Columbia Gorge Community College	The Dalles	Technical Assistance	\$	25,000
Oregon	ED18SEA3030002	City of Brookings	Brookings	Technical Assistance	\$	50,000
Pennsylvania	10114802	The Enterprise Center Community Development Corporation	Philadelphia	Public Works	\$	155,000
Pennsylvania	17914803	Bedford County Chamber Foundation	Alum Bank	Assistance to Coal Communities	\$	616,758
Pennsylvania	17914827	Towanda Municipal Authority	Towanda	Assistance to Coal Communities	\$	3,000,000
Pennsylvania	17914836	Juniata Business and Industry, Inc.	Mifflintown	Assistance to Coal Communities	\$	1,890,000
Pennsylvania	ED16PHI3020003	SEDA Council of Governments	Lewisburg	Planning	\$	70,000
Pennsylvania	ED16PHI3020010	Northern Tier Regional Planning & Development Commission	Towanda	Planning	\$	70,000
Pennsylvania	ED16PHI3020011	Economic Development Council of Northeastern Pennsylvania	Pittston	Planning	\$	70,000
Pennsylvania	ED16PHI3020025	Northwest Pennsylvania Regional Planning & Development Commission	Oil City	Planning	\$	70,000
Pennsylvania	ED16PHI3020046	Southwestern Pennsylvania Corporation	Pittsburgh	Planning	\$	70,000
Pennsylvania	ED16PHI3020047	North Central Pennsylvania Regional Planning & Development Commission	Ridgway	Planning	\$	70,000
Pennsylvania	ED16PHI3020049	Southern Alleghenies Planning And Development Commission	Altoona	Planning	\$	70,000
Pennsylvania	ED16PHI3030065	The Pennsylvania State University	University Park	Technical Assistance	\$	116,667
Pennsylvania	ED18HDQ3130006	Mid-Atlantic Employers' Association	King Of Prussia	Trade Adjustment Assistance	\$	1,155,374
Puerto Rico	16914820	Universidad del Sagrado Corazon	San Juan	Disaster Relief	\$	400,000
Puerto Rico	17914798	Puerto Rico Trade and Export Company	San Juan	Disaster Relief	\$	1,624,000
Puerto Rico	17914805	Puerto Rico Science, Technology and Research Trust	San Juan	Disaster Relief	\$	4,442,000
Puerto Rico	17914809	Foundation for Puerto Rico	San Juan	Disaster Relief	\$	5,584,880
Puerto Rico	17914810	University of Puerto Rico Mayaguez	Mayaguez	Disaster Relief	\$	500,000
Puerto Rico	17914824	Universidad del Sagrado Corazon	San Juan	Disaster Relief	\$	1,915,000
Puerto Rico	17914833	Centro Unido De Detallistas De Puerto Rico	San Juan	Disaster Relief	\$	801,824
Puerto Rico	17914835	Iniciativa Tecnologica Centro Oriental, Inc	Caguas	Disaster Relief	\$	3,508,551
Puerto Rico	17914838	Puerto Rico Manufacturing Extension, Inc.	San Juan	Disaster Relief	\$	1,172,635
Puerto Rico	ED16PHI3030073	University of Puerto Rico	Mayaguez	Technical Assistance	\$	116,667
Rhode Island	10114767	University of Rhode Island, Department of Environmental Management	Providence	Public Works	\$	1,661,500
South Carolina	17914837	U.S. Endowment for Forestry and Communities, Inc.	Greenville	Economic Adjustment Assistance	\$	3,000,000
South Carolina	40107250	Piedmont Technical College, Inc.	Greenwood	Public Works	\$	1,500,000
South Carolina	40107262	City of Bishopville	Bishopville	Public Works	\$	880,000
South Carolina	46907275	Darlington County Water and Sewer Authority	Darlington	Disaster Relief	\$	48,000
South Carolina	47907289	Berkeley County	Moncks Corner	Disaster Relief	\$	1,944,940
South Carolina	ED17ATL3030040	University of South Carolina	Columbia	Technical Assistance	\$	118,000
South Dakota	50105889	City of Lake Norden	Lake Norden	Public Works	\$	969,000
South Dakota	57905890	North Sioux City Economic Development Corporation	North Sioux City	Economic Adjustment Assistance	\$	686,586
South Dakota	ED16DEN3020002	Planning And Development District Iii	Yankton	Planning	\$	70,000
South Dakota	ED16DEN3020004	Central South Dakota Enhancement District	Pierre	Planning	\$	70,000
South Dakota	ED16DEN3020012	Northeast Council Governments	Aberdeen	Planning	\$	70,000
South Dakota	ED16DEN3020021	1St District Association of Local Governments	Watertown	Planning	\$	70,000
South Dakota	ED16DEN3020024	Black Hills Council of Local Governments	Rapid City	Planning	\$	70,000
South Dakota	ED16DEN3020034	Lower Brule Sioux Tribe	Lower Brule	Planning	\$	51,000
South Dakota	ED16DEN3020041	South Eastern Council of Governments	Sioux Falls	Planning	\$	70,000
South Dakota	ED16DEN3020095	Ogala Sioux Tribe of Pine Ridge Indian Reservation	Pine Ridge	Planning	\$	51,000
South Dakota	ED16DEN3020096	Rosebud Sioux Tribe	Rosebud	Planning	\$	23,000
South Dakota	ED16DEN3020097	Sisseton-Wahpeton Oyate	Agency Village	Planning	\$	51,000
South Dakota	ED16DEN3020101	Yankton Sioux Tribe	Wagner	Planning	\$	51,000
South Dakota	ED18DEN3030025	South Dakota State University	Brookings	Technical Assistance	\$	145,000

Tennessee	4010721701	City of Humboldt	Humboldt	Public Works	\$	1,372,000
Tennessee	40107260	Franklin County	Winchester	Public Works	\$	2,000,000
Tennessee	40107294	Town of Huntland	Huntland	Public Works	\$	500,000
Tennessee	47907274	City of Johnson City	Johnson City	Assistance to Coal Communities	\$	1,500,000
Tennessee	86905272	United South & Eastern Tribes, Inc.	Nashville	Economic Adjustment Assistance	\$	190,916
Tennessee	ED17ATL3030037	Tennessee Technological University	Cookeville	Technical Assistance	\$	118,000
Tennessee	ED17ATL3030038	University of Tennessee	Knoxville	Technical Assistance	\$	118,000
Tennessee	ED18ATL3020001	Memphis Area Association of Government (MAAG)	Cordova	Planning	\$	210,000
Tennessee	ED18ATL3020002	The South Central Tennessee Development District	Mount Pleasant	Planning	\$	210,000
Tennessee	ED18ATL3020003	Upper Cumberland Development District	Cookeville	Planning	\$	210,000
Tennessee	ED18ATL3020005	First Tennessee Development District	Johnson City	Planning	\$	210,000
Tennessee	ED18ATL3020007	Greater Nashville Regional Council (Inc)	Nashville	Planning	\$	210,000
Tennessee	ED18ATL3020008	Northwest Tennessee Development District Inc	Martin	Planning	\$	210,000
Tennessee	ED18ATL3020017	Southwest Tennessee Development District	Jackson	Planning	\$	210,000
Texas	80105226	City of Tullia	Tullia	Public Works	\$	1,200,000
Texas	80105227	City of San Angelo Development Corporation	San Angelo	Public Works	\$	1,250,000
Texas	80105242	EL Paso Water Utilities	El Paso	Public Works	\$	1,000,000
Texas	80105252	City of Corsicana	Corsicana	Public Works	\$	500,000
Texas	80105260	Brownsville Navigation District	Brownsville	Public Works	\$	1,800,000
Texas	80105265	Hidalgo Economic Development Corporation	Hidalgo	Public Works	\$	1,200,000
Texas	86905257	Lamar University	Beaumont	Disaster Relief	\$	350,000
Texas	87905222	City of Mount Vernon	Mount Vernon	Economic Adjustment Assistance	\$	1,500,000
Texas	87905229	Texas A&M University-Corpus Christi	Corpus Christi	Economic Adjustment Assistance	\$	350,000
Texas	87905233	Alamo Area Council of Governments	San Antonio	Economic Adjustment Assistance	\$	100,000
Texas	87905234	Brazos Valley Council of Governments	Bryan	Economic Adjustment Assistance	\$	180,000
Texas	87905235	Capital Area Council of Government	Austin	Economic Adjustment Assistance	\$	180,000
Texas	87905236	Deep East Texas Council of Governments	Jasper	Economic Adjustment Assistance	\$	180,000
Texas	87905237	Gulf Coast Economic Development District	Houston	Disaster Relief	\$	240,000
Texas	87905238	South East Texas Economic Development District	Beaumont	Disaster Relief	\$	180,000
Texas	87905239	Golden Crescent Regional Planning Commission	Victoria	Disaster Relief	\$	180,000
Texas	87905248	City of Port Lavaca	Port Lavaca	Disaster Relief	\$	1,200,000
Texas	87905249	Lamar State College Port Arthur	Port Arthur	Disaster Relief	\$	1,600,000
Texas	87905250	Port Arthur Economic Development Corporation	Port Arthur	Disaster Relief	\$	4,700,000
Texas	87905251	Port of Beaumont Navigation District of Jefferson Co TX	Beaumont	Disaster Relief	\$	5,000,000
Texas	87905254	City of Ingleside Texas	Ingleside	Disaster Relief	\$	5,000,000
Texas	87905255	Coastal Bend Council of Governments	Corpus Christi	Disaster Relief	\$	180,000
Texas	87905258	City of Port Aransas	Port Aransas	Disaster Relief	\$	5,000,000
Texas	87905268	Hidden Star Resources	Austin	Disaster Relief	\$	600,000
Texas	87905270	Port of Port Arthur Navigation District	Port Arthur	Disaster Relief	\$	4,800,000
Texas	87905271	City of Aransas Pass	Aransas Pass	Disaster Relief	\$	4,800,000
Texas	ED18AUS3020001	Alamo Area Council of Governments	San Antonio	Planning	\$	210,000
Texas	ED18AUS3020002	Deep East Texas Council of Governments	Jasper	Planning	\$	210,000
Texas	ED18AUS3020004	Brazos Valley Council of Governments	Bryan	Planning	\$	210,000
Texas	ED18AUS3020005	Coastal Bend Council of Governments	Corpus Christi	Planning	\$	210,000
Texas	ED18AUS3020006	South Texas Development Council	Laredo	Planning	\$	210,000
Texas	ED18AUS3020007	Lower Rio Grande Valley Development Council	Weslaco	Planning	\$	210,000
Texas	ED18AUS3020008	North Central Texas Council of Governments	Arlington	Planning	\$	210,000
Texas	ED18AUS3020009	Heart of Texas Economic Development District Incorporated	Waco	Planning	\$	210,000
Texas	ED18AUS3020010	Development District of Central Texas	Belton	Planning	\$	210,000
Texas	ED18AUS3020011	Nortex Regional Planning Commission	Wichita Falls	Planning	\$	210,000
Texas	ED18AUS3020012	North East Texas Economic Development District	Texarkana	Planning	\$	210,000
Texas	ED18AUS3020013	East Texas Council of Governments	Kilgore	Planning	\$	210,000
Texas	ED18AUS3020014	Texoma Council of Governments	Sherman	Planning	\$	210,000
Texas	ED18AUS3020015	Middle Rio Grande Development Council	Carrizo Springs	Planning	\$	210,000
Texas	ED18AUS3020016	South East Texas Economic Development District, Inc	Beaumont	Planning	\$	210,000
Texas	ED18AUS3020017	Concho Valley Economic Development District, Incorporated	San Angelo	Planning	\$	210,000
Texas	ED18AUS3020018	West Central Texas Economic Development District Corporation	Abilene	Planning	\$	210,000
Texas	ED18AUS3020021	Gulf Coast Economic Development District, Inc.	Houston	Planning	\$	210,000
Texas	ED18AUS3020022	Capital Area Council of Governments	Austin	Planning	\$	210,000
Texas	ED18AUS3020023	Golden Crescent Regional Planning Commission	Victoria	Planning	\$	210,000
Texas	ED18AUS3020025	South Texas College	McCallen	Planning	\$	100,000
Texas	ED18AUS3030024	Texoma Council of Governments	Sherman	Technical Assistance	\$	75,000
Texas	ED18AUS3030033	Texas A&M University-Corpus Christi	Corpus Christi	Technical Assistance	\$	112,850
Texas	ED18AUS3030035	The University of Texas At Tyle	Tyler	Technical Assistance	\$	112,850
Texas	ED18AUS3030037	The University of Texas Rio Grande Valley	Harlingen	Technical Assistance	\$	112,850
Texas	ED18HDQ3130002	University of Texas At San Antonio, The	San Antonio	Trade Adjustment Assistance	\$	1,145,078
Utah	50105892	Mount Pleasant City Corporation	Mount Pleasant	Public Works	\$	249,200
Utah	50105894	Provo City Corporation	Provo	Public Works	\$	1,819,227
Utah	57905891	Dixie State University	St. George	Economic Adjustment Assistance	\$	875,048
Utah	ED16DEN3020030	Mountainland Economic Development District	Orem	Planning	\$	70,000
Utah	ED16DEN3020052	Five County Association of Governments	St George	Planning	\$	70,000
Utah	ED16DEN3020078	Uintah Basin Economic Development District	Roosevelt	Planning	\$	70,000
Utah	ED16DEN3020083	South Eastern Utah Economic Development District	Price	Planning	\$	70,000
Utah	ED16DEN3020084	The Six County Economic Development District	Richfield	Planning	\$	70,000
Utah	ED16DEN3020085	Bear River Association of Government	Logan	Planning	\$	70,000
Utah	ED16DEN3020087	Wasatch Front Regional Council / Wasatch Front Economic Development District Salt Lake City	Logan	Planning	\$	70,000
Utah	ED18DEN3030035	Dixie State University	St George	Technical Assistance	\$	143,000



Vermont	17914808	Northern Vermont University	Lyndonville	Economic Adjustment Assistance	\$	289,420
Vermont	17914823	Town of Fairfax	Fairfax	Economic Adjustment Assistance	\$	463,000
Vermont	ED16PHI3020055	Northwest Regional Planning Commission	Saint Albans	Planning	\$	70,000
Vermont	ED16PHI3020056	Eastern Vermont Economic Development District, Inc.	Woodstock	Planning	\$	70,000
Vermont	ED18HDQ3030013	Rural Innovation Strategies, Inc.	Hartland	Technical Assistance	\$	330,000
Virgin Islands	16914818	Government of United States Virgin Islands	Charlotte Amalie	Disaster Relief	\$	304,000
Virginia	10114788	Commonwealth Center for Advanced Manufacturing	Disputanta	Public Works	\$	3,150,000
Virginia	ED16PHI3020006	Central Shenandoah Planning District Commission	Staunton	Planning	\$	70,000
Virginia	ED16PHI3020009	Mount Rogers Planning District Commission	Marion	Planning	\$	70,000
Virginia	ED16PHI3020012	Cumberland Plateau Planning District Commission	Lebanon	Planning	\$	70,000
Virginia	ED16PHI3020015	Lenowisco Planning District Commission	Duffield	Planning	\$	70,000
Virginia	ED16PHI3020016	Accomack-Norhampton Planning District Commission	Accomac	Planning	\$	70,000
Virginia	ED16PHI3020028	Northern Neck Planning District Commission	Warsaw	Planning	\$	70,000
Virginia	ED16PHI3020032	West Piedmont Planning District Commission	Martinsville	Planning	\$	70,000
Virginia	ED16PHI3020040	New River Valley Regional Commission	Radford	Planning	\$	70,000
Virginia	ED16PHI3020041	Southside Planning District Commissions	South Hill	Planning	\$	70,000
Virginia	ED16PHI3020044	Crater Planning District Commission	Petersburg	Planning	\$	70,000
Virginia	ED16PHI30300064	Virginia Polytechnic Institute & State University	Blacksburg	Technical Assistance	\$	116,667
Washington	77907436	Tri-County Economic Development District	Colville	Economic Adjustment Assistance	\$	30,000
Washington	77907455	Port of Pasco	Pasco	Disaster Relief	\$	7,110,012
Washington	77907462	Lewis County Economic Development Council	Chehalis	Assistance to Coal Communities	\$	300,000
Washington	ED17SEA3020006	Spokane Tribe of The Spokane Reservation	Wellpinit	Planning	\$	150,000
Washington	ED17SEA3020008	Makah Indian Tribe of The Makah Indian Reservation	Neah Bay	Planning	\$	180,000
Washington	ED17SEA3020015	Southeast Washington Economic Development Association	Clarkston	Planning	\$	75,000
Washington	ED17SEA3020016	Central Puget Sound Economic Development District	Seattle	Planning	\$	100,000
Washington	ED17SEA3020017	Tri County Economic Development District	Colville	Planning	\$	70,000
Washington	ED17SEA3020018	Benton-Franklin Council of Governments	Richland	Planning	\$	75,000
Washington	ED17SEA3020056	Jamestown S'Klallam Tribe	Sequim	Planning	\$	186,000
Washington	ED17SEA3020076	North Central Washington Economic Development District	Wenatchee	Planning	\$	75,000
Washington	ED17SEA3020078	North Olympic Peninsula Resource Conservation & Development Council	Port Angeles	Planning	\$	82,000
Washington	ED17SEA3030027	Washington State University	Pullman	Technical Assistance	\$	100,000
Washington	ED17SEA3030032	University of Washington	Seattle	Technical Assistance	\$	100,000
Washington	ED18HDQ3130010	Trade Task Group	Seattle	Trade Adjustment Assistance	\$	1,286,622
Washington	ED18SEA3020007	Cowlitz Wahkiakum Council of Governments	Kelso	Planning	\$	70,000
West Virginia	10114775	Business Development Corporation of the Northern Panhandle	Weirton	Public Works	\$	2,640,000
West Virginia	10114796	City of Weirton	Weirton	Public Works	\$	1,174,435
West Virginia	16914816	Warrior Creek Development, Inc.	War	Assistance to Coal Communities	\$	69,700
West Virginia	16914819	Coalfield Development Corporation	Wayne	Assistance to Coal Communities	\$	222,000
West Virginia	17914795	Greenbrier Valley Economic Development Corporation	Maxwelton	Economic Adjustment Assistance	\$	1,212,000
West Virginia	17914812	Buffalo Creek Public Service District	Amherstdale	Assistance to Coal Communities	\$	1,500,000
West Virginia	17914815	City of Bluefield	Bluefield	Assistance to Coal Communities	\$	1,000,000
West Virginia	17914828	Region 4 Planning and Development Council	Summersville	Assistance to Coal Communities	\$	250,000
West Virginia	17914829	Woodlands Community Lenders, Inc.	Elkins	Assistance to Coal Communities	\$	452,500
West Virginia	17914830	Benedum Airport Authority	Bridgeport	Disaster Relief	\$	1,704,000
West Virginia	17914832	Branchland-Midkiff Public Service District	Branchland	Assistance to Coal Communities	\$	540,000
West Virginia	ED16PHI3020019	Eastern Panhandle Regional Planning And Development Council	Martinsburg	Planning	\$	70,000
West Virginia	ED16PHI3020024	Region VII Planning and Development Council	Buckhannon	Planning	\$	70,000
West Virginia	ED16PHI3020033	Mid-Ohio Valley Regional Planning and Development Council	Parkersburg	Planning	\$	70,000
West Virginia	ED16PHI3020051	Region 1 Planning & Development Council	Princeton	Planning	\$	70,000
West Virginia	ED16PHI3020053	Region 2 Plg & Dev Council	Huntington	Planning	\$	70,000
West Virginia	ED16PHI3020054	Region 4 Planning and Development Council	Summersville	Planning	\$	70,000
West Virginia	ED16PHI3020060	Regional Intergovernmental Council	South Charleston	Planning	\$	70,000
West Virginia	ED16PHI3020080	Region 8 Planning and Development Council	Petersburg	Planning	\$	70,000
West Virginia	ED16PHI3020081	Bel-O-Mar Regional Council	Wheeling	Planning	\$	70,000
West Virginia	ED16PHI3020082	Region VI Planning and Development Council	Fairmont	Planning	\$	70,000
West Virginia	ED16PHI3030072	Marshall University Research Corporation	Huntington	Technical Assistance	\$	116,667
West Virginia	ED18PHI3020005	Marshall University Research Corporation	Huntington	Planning	\$	100,000
West Virginia	17914814	McDowell County Public Service District	Welch	Assistance to Coal Communities	\$	1,750,000
Wisconsin	60106112	Lac du Flambeau Band of Lake Superior Chippewa Indians	Lac du Flambeau	Public Works	\$	3,000,000
Wisconsin	67906117	City of La Crosse	La Crosse	Disaster Relief	\$	3,677,920
Wisconsin	ED16CHI30300030	University of Wisconsin System	Madison	Technical Assistance	\$	150,000
Wisconsin	ED16CHI30300038	University of Wisconsin- System	Menomonie	Technical Assistance	\$	80,000
Wisconsin	ED18CHI3020001	Great Lakes Inter-Tribal Council, Inc.	Lac Du Flambeau	Planning	\$	153,000
Wisconsin	ED18CHI3020005	East Central Wisconsin Regional Planning Commission	Menasha	Planning	\$	210,000
Wisconsin	ED18CHI3020018	Southwestern Wisconsin Regional Planning Commission	Platteville	Planning	\$	210,000
Wisconsin	ED18CHI3020021	Thrive, Inc.	Madison	Planning	\$	70,000
Wisconsin	ED18CHI3020028	West Central Wisconsin Regional Planning Commission	Eau Claire	Planning	\$	16,880
Wyoming	57905905	Sheridan Economic & Educational Development Authority	Sheridan	Assistance to Coal Communities	\$	2,258,559
Wyoming	ED18DEN3020006	Central Wyoming College	Riverton	Planning	\$	40,000
					\$	383,102,024

**\*Note: EDA did not have any investments in FY 2018 to American Samoa, Northern Mariana Islands, Guam, Federated States of Micronesia, Republic of Marshall Islands, or Republic of Palau.**

**\*For grants that receive funding from more than one program, this report lists the full amount under the program that contributes the most funding. This results in small differences at the aggregate program level when compared to financial reports for the same period.**

Summary of estimated private investment from EDA FY 2018 Public Works and Economic Adjustment Assistance construction awards

States	Award #	Applicant	City	Program Category	EDA \$	Est.Private Investment	Priv. Inv.Ratio
Alabama	40107248	JC Calhoun State Community College	Tanner	Public Works	\$ 1,535,000	\$ 32,515,000	21.2
Alabama	40107272	City of Brewton	Brewton	Public Works	\$ 2,800,000	\$ 5,910,000	2.1
Alabama	40107295	Wallace State Community College - Hanceville	Hanceville	Public Works	\$ 2,000,000	-	-
Alabama	40107299	City of Talladega	Talladega	Public Works	\$ 459,557	\$ 100,000,000	217.6
Alaska	70107438	Organized Village of Kake	Kake	Public Works	\$ 1,800,000	\$ 2,600,000	1.4
Alaska	70107452	City of Chevak	Chevak	Public Works	\$ 562,571	\$ 406,000	0.7
Arizona	7010715201	Chicanos Por La Causa, Inc.	Phoenix	Public Works	\$ 808,666	-	-
Arizona	70107457	Chinle Chapter Government	Chinle	Public Works	\$ 250,000	-	-
Arkansas	80105217	City of Fort Smith	Fort Smith	Public Works	\$ 800,000	-	-
Arkansas	80105225	Stone County	Mountain View	Public Works	\$ 1,000,000	\$ 650,000	0.7
Arkansas	80105264	City of North Little Rock	North Little Rock	Public Works	\$ 869,964	\$ 12,000,000	13.8
Arkansas	80105266	Cleveland County	Rison	Public Works	\$ 660,000	\$ 5,000,000	7.6
California	7010727501	City of Willows	Willows	Public Works	\$ 1,218,304	-	-
California	70107415	San Manuel Band of Mission Indians	Highland	Public Works	\$ 2,964,360	\$ 23,000,000	7.8
California	70107441	Bishop Paiute Tribe	Bishop	Public Works	\$ 2,116,710	\$ 5,000,000	2.4
California	70107442	San Diego Electrical Training Trust	San Diego	Public Works	\$ 3,000,000	-	-
California	70107451	Peralta Community College District	Oakland	Public Works	\$ 3,000,000	-	-
California	70107461	City of Perris	Perris	Public Works	\$ 5,510,964	\$ 10,000,000	1.8
Delaware	10114801	Delaware Technical and Community College	Dover	Public Works	\$ 1,975,800	\$ 1,501,500	0.8
Florida	40107242	Embry-Riddle Aeronautical University, Inc.	Daytona Beach	Public Works	\$ 1,000,000	\$ 1,640,000	1.6
Georgia	40107225	Moultrie Colquitt County Development Authority	Moultrie	Public Works	\$ 1,860,871	\$ 2,000,000	1.1
Georgia	40107249	City of Forsyth	Forsyth	Public Works	\$ 510,790	\$ 46,000,000	90.1
Georgia	40107256	City of Chickamauga	Chickamauga	Public Works	\$ 720,135	\$ 100,000,000	138.9
Idaho	7010693201	East Central Idaho Planning and Development Association, Inc.	Rexburg	Public Works	\$ 789,000	-	-
Idaho	70107454	Idaho Rural Water Association	Boise	Public Works	\$ 1,447,200	\$ 450,000	0.3
Illinois	60106096	Greenville College	Greenville	Public Works	\$ 999,968	-	-
Illinois	60106101	Taylorville Development Association	Taylorville	Public Works	\$ 537,288	\$ 60,000,000	111.7
Illinois	60106103	City of Carmi	Carmi	Public Works	\$ 512,680	\$ 800,000	1.6
Illinois	60106106	City of Wanuegan	Wanuegan	Public Works	\$ 2,142,247	\$ 3,000,000	1.4
Illinois	60106110	Southern Illinois Airport Authority	Carbondale	Public Works	\$ 3,750,000	\$ 400,000	0.1
Illinois	67906097	Prairie State College	Chicago Heights	Economic Adjustment Assistance	\$ 938,447	\$ 8,500,000	9.1
Illinois	67906108	America's Central Port District	Granite City	Economic Adjustment Assistance	\$ 2,272,895	\$ 1,250,000	0.5
Illinois	67906113	Illinois Eastern Community Colleges District 529	Olney	Economic Adjustment Assistance	\$ 300,000	-	-
Iowa	50105898	Iowa State University Research Park	Ames	Public Works	\$ 1,743,558	\$ 10,000,000	5.7
Kansas	50105884	City of Emporia	Emporia	Public Works	\$ 1,341,000	\$ 38,000,000	28.3
Kansas	50105885	City of Sterling	Sterling	Public Works	\$ 247,609	\$ 2,000,000	8.1
Kentucky	40107240	Simpson County Water District	Franklin	Public Works	\$ 665,000	\$ 193,000,000	290.2
Kentucky	40107303	City of Carrollton	Carrollton	Public Works	\$ 820,000	\$ 286,000,000	348.8
Kentucky	4790709802	WestCare Kentucky, Inc.	Ashcamp	Economic Adjustment Assistance	\$ 330,790	\$ 800,000	2.4
Louisiana	80105231	Louisiana State University	Baton Rouge	Public Works	\$ 1,100,000	\$ 80,000,000	72.7
Louisiana	80105240	West St Mary Parish Port Harbor and Terminal District	Franklin	Public Works	\$ 1,300,000	-	-
Louisiana	80105246	Central Louisiana Economic Development Alliance	Alexandria	Public Works	\$ 400,000	\$ 500,000	1.3
Maine	10114790	Town of Hartland	Hartland	Public Works	\$ 1,930,000	-	-
Maine	10114799	Midcoast Regional Redevelopment Authority	Branswick	Public Works	\$ 615,000	-	-
Maine	10114806	City of Rockland	Rockland	Public Works	\$ 830,000	-	-
Maryland	10114817	Town of Easton	Easton	Public Works	\$ 2,282,750	\$ 4,500,000	2.0
Massachusetts	10114797	City of Chelsea	Chelsea	Public Works	\$ 3,000,000	\$ 8,697,974	2.9
Michigan	60106100	City of Coopersville	Coopersville	Public Works	\$ 2,167,200	\$ 54,000,000	24.9
Michigan	60106102	Saginaw County Road Commission	Saginaw	Public Works	\$ 2,000,000	\$ 6,500,000	3.3
Michigan	60106107	City of Fremont	Fremont	Public Works	\$ 738,425	\$ 4,400,000	6.0
Minnesota	6010607801	Bendaji Regional Airport Authority	Bendaji	Public Works	\$ 200,000	\$ 2,000,000	10.0
Minnesota	60106119	Lower Sioux Indian Community	Morton	Public Works	\$ 4,490,615	\$ 1,614,169	0.4
Mississippi	40107246	MS State University Research & Technology Corporation	Starkville	Public Works	\$ 1,815,000	-	-
Mississippi	40107267	City of Baldwin	Baldwin	Public Works	\$ 1,555,675	\$ 56,600,000	36.4
Mississippi	47907296	City of Corinth	Corinth	Economic Adjustment Assistance	\$ 1,500,000	\$ 158,500,000	105.7
Missouri	50105881	Cox College	Springfield	Public Works	\$ 2,230,186	-	-
Missouri	50105886	City of Piedmont	Piedmont	Public Works	\$ 500,000	-	-
Missouri	57905904	City of Potosi	Potosi	Economic Adjustment Assistance	\$ 1,729,940	\$ 10,400,000	6.0
Montana	50105883	Interbel Telephone Cooperative	Eureka	Public Works	\$ 486,000	\$ 150,000	0.3
Nebraska	50105882	City of Gothenburg	Gothenburg	Public Works	\$ 615,673	\$ 675,000	1.1
Nebraska	50105893	Metropolitan Community College	Omaha	Public Works	\$ 393,812	-	-
New Jersey	10114804	The Borough of Paulsboro	Paulsboro	Public Works	\$ 1,416,805	\$ 10,000,000	7.1
New Jersey	10114807	County of Cape May, New Jersey	Cape May Court House	Public Works	\$ 3,000,000	\$ 1,900,000	0.6
New Mexico	80105220	City of Roswell	Roswell	Public Works	\$ 800,000	-	-
New Mexico	80105232	Partnership for Community Action	Albuquerque	Public Works	\$ 1,000,000	-	-
New Mexico	80105243	Village of Los Lunas	Los Lunas	Public Works	\$ 1,300,000	-	-
New York	10114789	Ft. Snodgrass Community College	Troy	Public Works	\$ 1,500,000	\$ 3,250,000	2.2
New York	10114793	Research Foundation State University of New York at Alfred	Alfred	Public Works	\$ 1,500,000	\$ 500,000	0.3
New York	10114800	Jefferson County Industrial Development Agency	Watertown	Public Works	\$ 703,000	\$ 3,500,000	5.0
North Carolina	40107184	Town of Black Mountain	Black Mountain	Public Works	\$ 827,580	\$ 25,400,000	30.7
North Carolina	40107243	Davie County	Mocksville	Public Works	\$ 2,000,000	\$ 23,120,000	11.6
North Carolina	40107244	Halifax Community College	Weldon	Public Works	\$ 2,000,000	\$ 18,900,000	9.5
North Carolina	40107269	City of Claremont	Claremont	Public Works	\$ 2,000,000	\$ 88,228,000	44.1
North Carolina	40107277	Jackson County	Sylva	Public Works	\$ 2,015,395	\$ 1,250,000	0.6
Ohio	60106104	Village of Delta	Delta	Public Works	\$ 958,885	\$ 81,191,809	84.7
Oklahoma	80105221	City of Sapulpa	Sapulpa	Public Works	\$ 1,500,000	\$ 813,000,000	542.0
Oklahoma	80105267	City of Sallisaw	Sallisaw	Public Works	\$ 490,000	-	-
Oregon	70107439	City of Silverton	Silverton	Public Works	\$ 1,150,000	\$ 2,000,000	1.7
Oregon	70107446	Oregon Institute of Technology	Klamath Falls	Public Works	\$ 2,984,514	\$ 692,400,000	232.0
Pennsylvania	10114802	The Enterprise Center Community Development Corporation	Philadelphia	Public Works	\$ 155,000	-	-
Rhode Island	10114767	University of Rhode Island, Department of Environmental Management	Providence	Public Works	\$ 1,661,500	\$ 1,200,000	0.7
South Carolina	40107250	Piedmont Technical College, Inc.	Greenwood	Public Works	\$ 1,500,000	\$ 16,320,000	10.9
South Carolina	40107262	City of Bishopville	Bishopville	Public Works	\$ 880,000	\$ 12,000,000	13.6
South Dakota	50105889	City of Lake Norden	Lake Norden	Public Works	\$ 969,000	\$ 220,677,491	227.7
South Dakota	57905890	North Sioux City Economic Development Corporation	North Sioux City	Economic Adjustment Assistance	\$ 686,586	\$ 12,800,000	18.6
Tennessee	4010721701	City of Humboldt	Humboldt	Public Works	\$ 1,372,000	-	-
Tennessee	40107260	Franklin County	Winchester	Public Works	\$ 2,000,000	\$ 7,500,000	3.8
Tennessee	40107294	Town of Huntland	Huntland	Public Works	\$ 500,000	\$ 7,045,200	14.1
Texas	80105226	City of Tulia	Tulia	Public Works	\$ 1,200,000	\$ 2,000,000	1.7
Texas	80105227	City of San Angelo Development Corporation	San Angelo	Public Works	\$ 1,250,000	\$ 19,000,000	15.2
Texas	80105242	EL Paso Water Utilities	El Paso	Public Works	\$ 1,000,000	-	-
Texas	80105252	City of Corsicana	Corsicana	Public Works	\$ 500,000	\$ 7,000,000	14.0
Texas	80105260	Brownsville Navigation District	Brownsville	Public Works	\$ 1,800,000	\$ 3,000,000	1.7
Texas	80105265	Hidalgo Economic Development Corporation	Hidalgo	Public Works	\$ 1,200,000	\$ 20,000,000	16.7
Texas	87905222	City of Mount Vernon	Mount Vernon	Economic Adjustment Assistance	\$ 1,500,000	\$ 2,000,000	1.3
Utah	50105892	Mount Pleasant City Corporation	Mount Pleasant	Public Works	\$ 249,200	\$ 1,150,000	4.6
Utah	50105894	Provo City Corporation	Provo	Public Works	\$ 1,819,227	\$ 35,000,000	19.2
Vermont	17914823	Town of Fairfax	Fairfax	Economic Adjustment Assistance	\$ 463,000	\$ 3,000,000	6.5
Virginia	10114788	Commonwealth Center for Advanced Manufacturing	Disputanta	Public Works	\$ 3,150,000	-	-
West Virginia	10114775	Business Development Corporation of the Northern Panhandle	Weirton	Public Works	\$ 2,640,000	\$ 1,010,000	0.4
West Virginia	10114796	City of Weirton	Weirton	Public Works	\$ 1,174,435	\$ 5,000,000	4.3
West Virginia	17914795	Greenbrier Valley Economic Development Corporation	Maxwelton	Economic Adjustment Assistance	\$ 1,212,000	\$ 1,450,000	1.2
Wisconsin	60106112	Lac du Flambeau Band of Lake Superior Chippewa Indians	Lac du Flambeau	Public Works	\$ 3,000,000	\$ 6,000,000	2.0
<b>Grand Total</b>					<b>\$ 147,169,777</b>	<b>\$ 3,488,752,143</b>	